

PPP1R15B RABBIT PAB

货号: N225043

产品全名: PPP1R15B 兔多抗

基因符号 PPP1R15B; Protein phosphatase 1 regulatory subunit 15B

UNIPROT ID: Q5SWA1

背景: Maintains low levels of EIF2S1 phosphorylation in unstressed cells by promoting its dephosphorylation by PPI.

抗原: The antiserum was produced against synthesized peptide derived from the Internal region of human PPP1R15B. AA range:411-460

经过测试的应用: WB,IHC-P,ELISA

推荐稀释比: WB: 1/500-1/1000 IHC: 1/50-1/100 ELISA: 1/10000

种属反应性: Rabbit

克隆性: Rabbit Polyclonal

分子量: Calculated MW: 79 kDa; Observed MW: 79 kDa

亚型: IgG

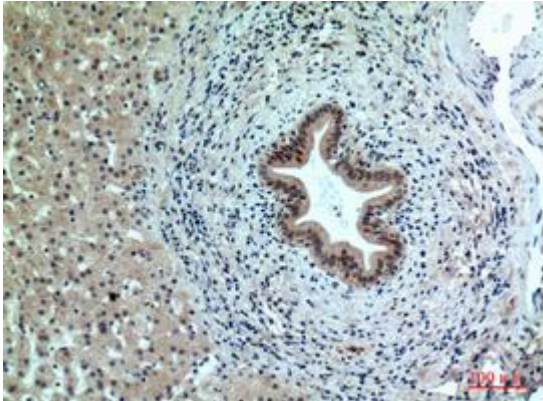
纯化: Affinity Purified

种属反应性: Human

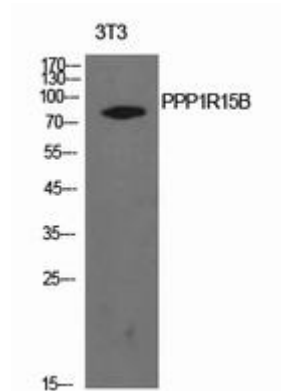
成分: PBS (without Mg²⁺ and Ca²⁺), pH 7.3 containing 50% glycerol, 0.5% BSA and 0.02% sodium azide

研究领域: Signal Transduction

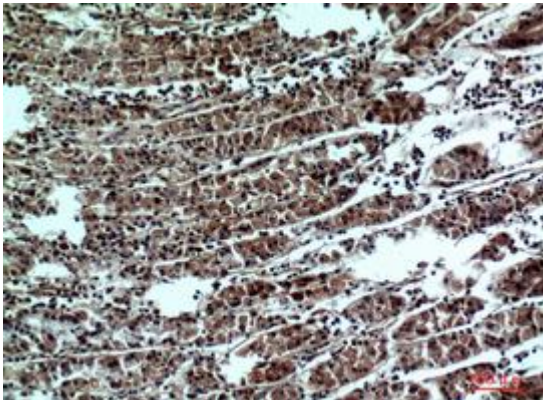
储存和运输: Store at -20°C. Avoid repeated freezing and thawing



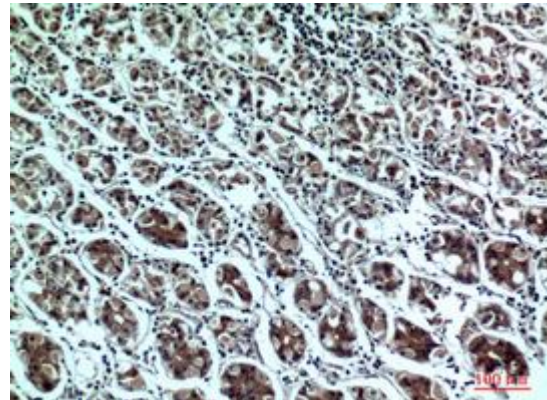
Immunohistochemistry analysis of paraffin-embedded Human liver using PPP1R15B antibody. High-pressure and temperature Sodium Citrate pH 6.0 was used for antigen retrieval.



Western blot analysis of PPP1R15B in NIH3T3 lysates using PPP1R15B antibody.



Immunohistochemistry analysis of paraffin-embedded Human stomach using PPP1R15B antibody. High-pressure and temperature Sodium Citrate pH 6.0 was used for antigen retrieval.



Immunohistochemistry analysis of paraffin-embedded Human stomach using PPP1R15B antibody. High-pressure and temperature Sodium Citrate pH 6.0 was used for antigen retrieval.