

## PPM1K RABBIT PAB

货号: S219360

产品全名: PPM1K 兔多抗

基因符号 BDP; PTMP; PP2Cm; MSUDMV; PP2Ckappa; UG0882E07

**UNIPROT ID:** Q8N3J5 (Gene Accession - BC037552)

**背景:** This gene encodes a member of the PPM family of Mn<sup>2+</sup>/Mg<sup>2+</sup>-dependent protein phosphatases. The encoded protein, essential for cell survival and development, is targeted to the mitochondria where it plays a key role in regulation of the mitochondrial permeability transition pore.

**抗原:** Fusion protein of human PPM1K

**经过测试的应用:** ELISA, IHC

**推荐稀释比:** IHC: 25-50; ELISA: 5000-10000

**种属反应性:** Rabbit

**克隆性:** Rabbit Polyclonal

**亚型:** Immunogen-specific rabbit IgG

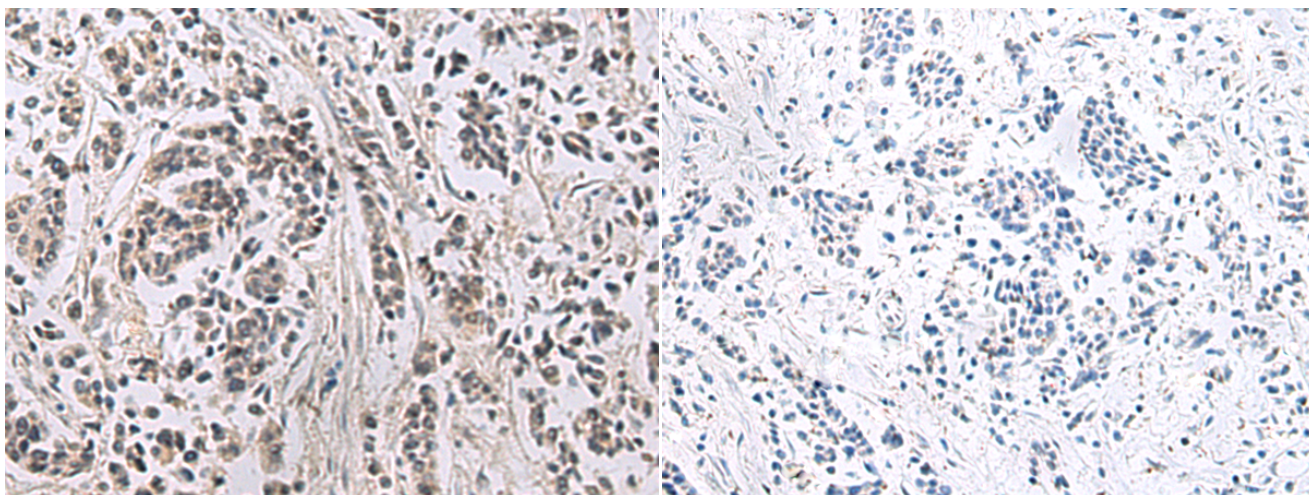
**纯化:** Antigen affinity purification

**种属反应性:** Human, Mouse

**成分:** PBS (without Mg<sup>2+</sup> and Ca<sup>2+</sup>), pH 7.4, 150 mM NaCl, 0.05% Sodium Azide and 40% glycerol

**研究领域:** Signal Transduction, Metabolism, Cardiovascular

**储存和运输:** Store at -20°C. Avoid repeated freezing and thawing



Immunohistochemistry analysis of paraffin embedded Human breast cancer tissue using 219360(PPM1K Antibody) at a dilution of 1/40(Cytoplasm).

In comparison with the IHC on the left, the same paraffin-embedded Human breast cancer tissue is first treated with the fusion protein and then with 219360(Anti-PPM1K Antibody) at dilution 1/40.