

## PPM1D RABBIT PAB

货号: S216877

产品全名: PPM1D 兔多抗

基因符号: WIPI1; PP2C-DELTA

**UNIPROT ID:** O15297 (Gene Accession - BC033893)

**背景:** The protein encoded by this gene is a member of the PP2C family of Ser/Thr protein phosphatases. PP2C family members are known to be negative regulators of cell stress response pathways. The expression of this gene is induced in a p53-dependent manner in response to various environmental stresses. While being induced by tumor suppressor protein TP53/p53, this phosphatase negatively regulates the activity of p38 MAP kinase, MAPK/p38, through which it reduces the phosphorylation of p53, and in turn suppresses p53-mediated transcription and apoptosis. This phosphatase thus mediates a feedback regulation of p38-p53 signaling that contributes to growth inhibition and the suppression of stress induced apoptosis. This gene is located in a chromosomal region known to be amplified in breast cancer. The amplification of this gene has been detected in both breast cancer cell line and primary breast tumors, which suggests a role of this gene in cancer development.

**抗原:** Fusion protein of human PPM1D

**经过测试的应用:** ELISA, WB, IHC

**推荐稀释比:** IHC: 40-200; WB: 200-1000; ELISA: 2000-5000

**种属反应性:** Rabbit

**克隆性:** Rabbit Polyclonal

**亚型:** Immunogen-specific rabbit IgG

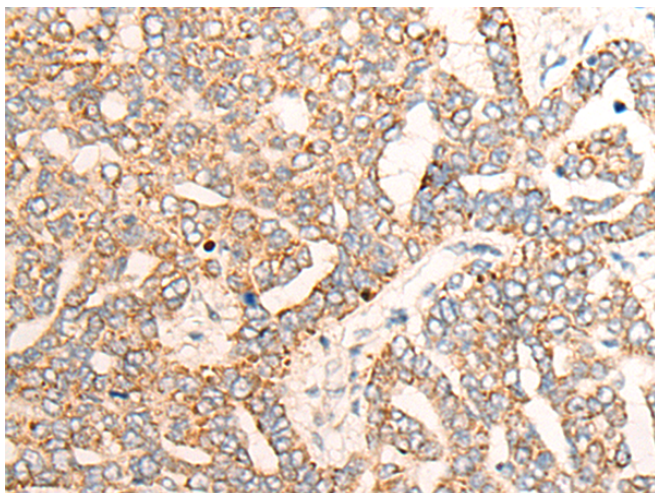
**纯化:** Antigen affinity purification

**种属反应性:** Human, Mouse

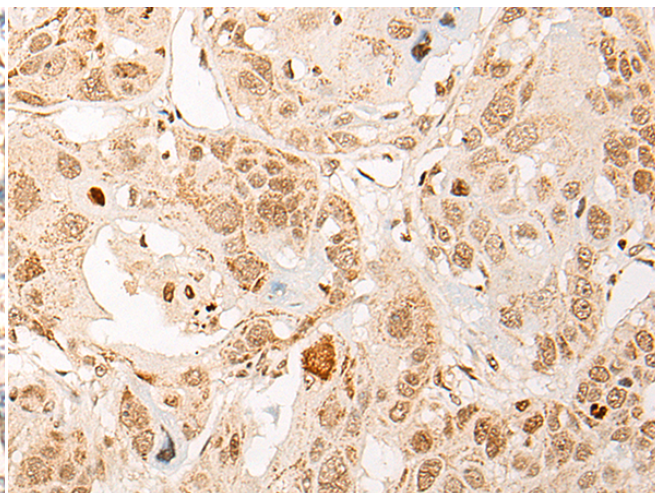
**成分:** PBS (without Mg<sup>2+</sup> and Ca<sup>2+</sup>), pH 7.4, 150 mM NaCl, 0.05% Sodium Azide and 40% glycerol

**研究领域:** Signal Transduction, Cancer

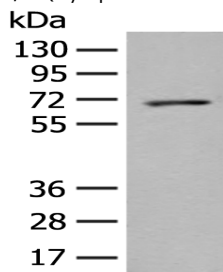
**储存和运输:** Store at -20°C. Avoid repeated freezing and thawing



Immunohistochemistry analysis of paraffin-embedded Human liver cancer tissue using 216877(PPM1D Antibody) at a dilution of 1/50(Cytoplasm or Nucleus).



Immunohistochemistry analysis of paraffin-embedded Human esophagus cancer tissue using 216877(Anti-PPM1D Antibody) at a dilution of 1/50.



Gel: 8%SDS-PAGE, Lysate: 40 µg;

Lane: Human placenta tissue lysate;

Primary antibody: 216877(PPM1D Antibody) at dilution 1/200;

Secondary antibody: Goat anti rabbit IgG at 1/8000 dilution;

Exposure time: 30 seconds



# Product Description

Pioneering GTPase and Oncogene Product Development since 2010

---