

## PPIA RABBIT PAB

货号: S217707

产品全名: PPIA 兔多抗

基因符号: CYPA; CYPH; HEL-S-69p

**UNIPROT ID:** P62937 (Gene Accession - BC000689)

**背景:** This gene encodes a member of the peptidyl-prolyl cis-trans isomerase (PPIase) family. PPIases catalyze the cis-trans isomerization of proline imidic peptide bonds in oligopeptides and accelerate the folding of proteins. The encoded protein is a cyclosporin binding-protein and may play a role in cyclosporin A-mediated immunosuppression. The protein can also interact with several HIV proteins, including p55 gag, Vpr, and capsid protein, and has been shown to be necessary for the formation of infectious HIV virions.

**抗原:** Fusion protein of human PPIA

**经过测试的应用:** ELISA, WB, IHC

**推荐稀释比:** IHC: 40-150;WB: 500-2000;ELISA: 2000-5000

**种属反应性:** Rabbit

**克隆性:** Rabbit Polyclonal

**亚型:** Immunogen-specific rabbit IgG

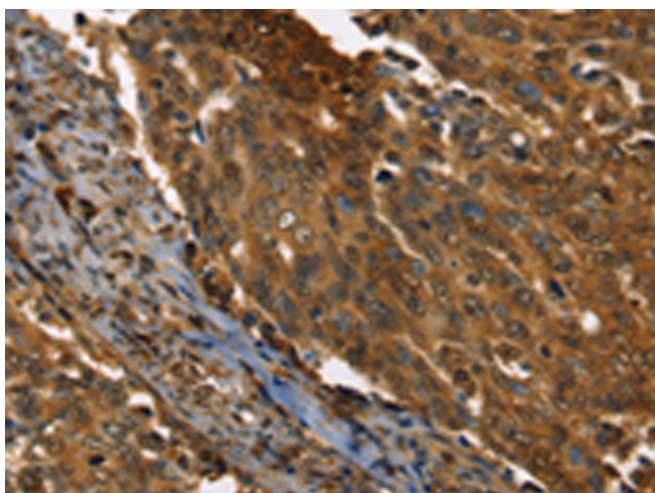
**纯化:** Antigen affinity purification

**种属反应性:** Human, Mouse, Rat

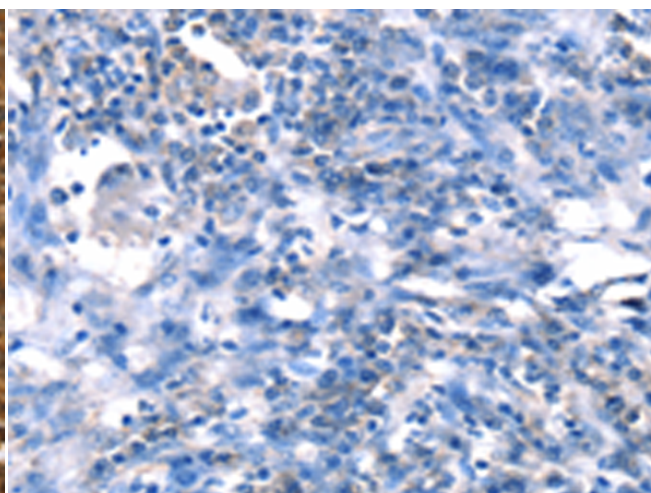
**成分:** PBS (without Mg<sup>2+</sup> and Ca<sup>2+</sup>), pH 7.4, 150 mM NaCl, 0.05% Sodium Azide and 40% glycerol

**研究领域:** Signal Transduction, Immunology

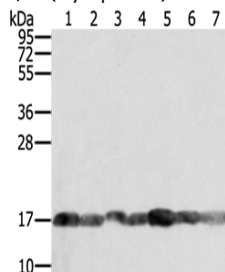
**储存和运输:** Store at -20°C. Avoid repeated freezing and thawing



Immunohistochemistry analysis of paraffin embedded Human cervical cancer tissue using 217707 (PPIA Antibody) at a dilution of 1/35 (Cytoplasm).



In comparison with the IHC on the left, the same paraffin-embedded Human cervical cancer tissue is first treated with the fusion protein and then with 217707 (Anti-PPIA Antibody) at dilution 1/35.



Gel: 12% SDS-PAGE, Lysate: 40 µg;  
Lane 1-7: PC3 cells, Raji cells, NIH/3T3 cells, K562 cells, hela cells, hepg2 cells, Jurkat cells;  
Primary antibody: 217707 (PPIA Antibody) at dilution 1/400;  
Secondary antibody: Goat anti rabbit IgG at 1/8000 dilution;  
Exposure time: 5 seconds