

PPEF1 RABBIT PAB

货号: S219168

产品全名: PPEF1 兔多抗

基因符号 PP7; PPEF; PPP7C; PPP7CA

UNIPROT ID: O14829 (Gene Accession - BC036026)

背景: This gene encodes a member of the serine/threonine protein phosphatase with EF-hand motif family. The protein contains a protein phosphatase catalytic domain, and at least two EF-hand calcium-binding motifs in its C terminus. Although its substrate(s) is unknown, the encoded protein has been suggested to play a role in specific sensory neuron function and/or development. This gene shares high sequence similarity with the Drosophila retinal degeneration C (rdgC) gene. Several alternatively spliced transcript variants, each encoding a distinct isoform, have been described.

抗原: Fusion protein of human PPEF1

经过测试的应用: ELISA, WB, IHC

推荐稀释比: IHC: 80-400;WB: 1000-5000;ELISA: 5000-10000

种属反应性: Rabbit

克隆性: Rabbit Polyclonal

亚型: Immunogen-specific rabbit IgG

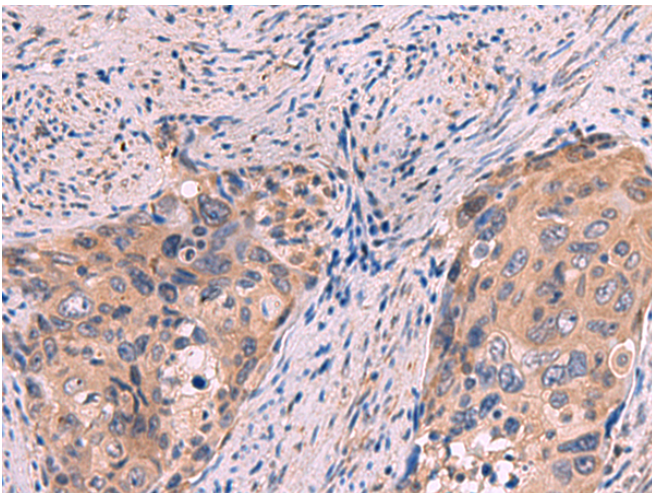
纯化: Antigen affinity purification

种属反应性: Human

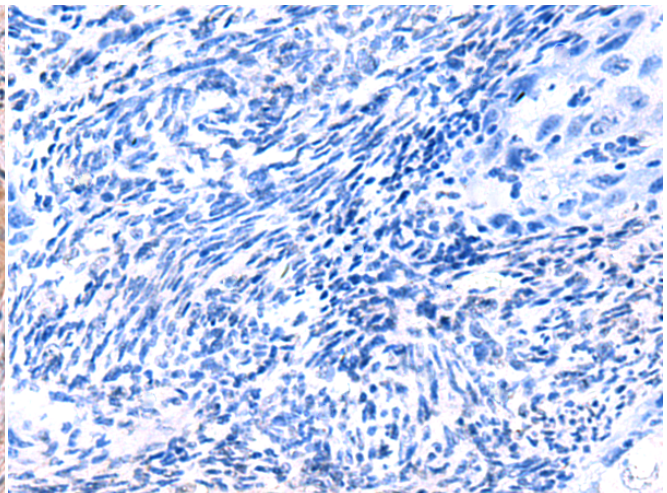
成分: PBS (without Mg²⁺ and Ca²⁺), pH 7.4, 150 mM NaCl, 0.05% Sodium Azide and 40% glycerol

研究领域: Signal Transduction

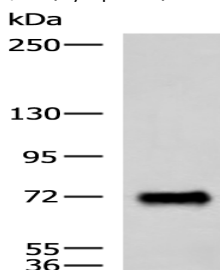
储存和运输: Store at -20°C. Avoid repeated freezing and thawing



Immunohistochemistry analysis of paraffin embedded Human cervical cancer tissue using 219168 (PPEF1 Antibody) at a dilution of 1/100 (Cytoplasm).



In comparison with the IHC on the left, the same paraffin-embedded Human cervical cancer tissue is first treated with the fusion protein and then with 219168 (Anti-PPEF1 Antibody) at dilution 1/100.



Gel: 6%SDS-PAGE, Lysate: 40 µg;

Lane: Human fetal brain tissue lysate;

Primary antibody: 219168 (PPEF1 Antibody) at dilution 1/1500;

Secondary antibody: HRP-conjugated Goat anti rabbit IgG at 1/5000 dilution;

Exposure time: 1 minute