

## PPCEL RABBIT MAB

货号: N263502

产品全名: PPCEL 兔单克隆抗体

基因符号 CMS22; Prolylendopeptidase-like

**UNIPROT ID:** Q4J6C6

背景: Serine peptidase whose precise substrate specificity remains unclear.

抗原: Recombinant protein of human PPCEL/PREPL

经过测试的应用: WB,IHC-P,IP

推荐稀释比: WB: 1/500-1/1000 IHC: 1/50-1/100 IP: 1/20

种属反应性: Rabbit

克隆性: Rabbit Monoclonal

克隆编号: R08-8A2

分子量: Calculated MW: 84 kDa; Observed MW: 72 kDa

亚型: IgG

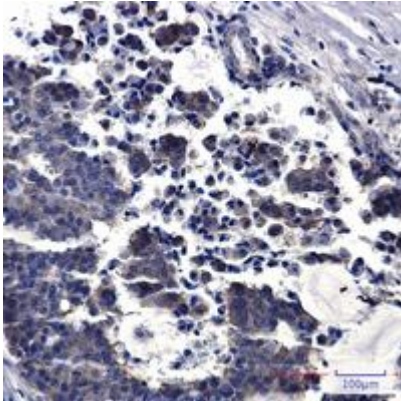
纯化: Affinity Purified

种属反应性: Human, Mouse and Rat,Hamster

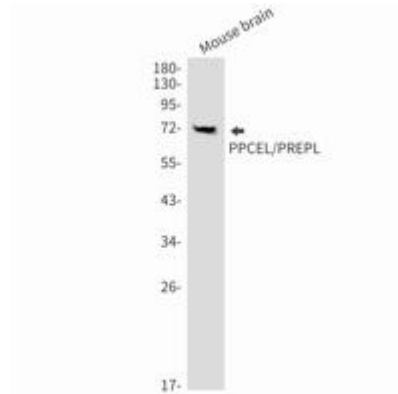
成分: PBS (without Mg<sup>2+</sup> and Ca<sup>2+</sup>), pH 7.3 containing 50% glycerol, 0.5% BSA and 0.02% sodium azide

研究领域: -

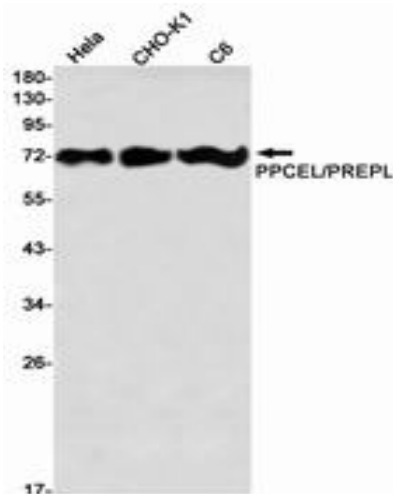
储存和运输: Store at -20°C. Avoid repeated freezing and thawing



Immunohistochemistry analysis of paraffin-embedded Human breast cancer using PPCEL/PREPL antibody. High-pressure and temperature Sodium Citrate pH 6.0 was used for antigen retrieval.



Western blot analysis of PPCEL/PREPL in mouse brain lysates using PPCEL antibody.



Western blot analysis of PPCEL/PREPL in HeLa, CHO-K1, C6 lysates using PPCEL/PREPL antibody.