

PPCEL RABBIT MAB

货号: N263503

产品全名: PPCEL 兔单克隆抗体

基因符号 CMS22; Prolylendopeptidase-like

UNIPROT ID: Q4J6C6

背景: Serine peptidase whose precise substrate specificity remains unclear.

抗原: A synthetic peptide of human PPCEL/PREPL

经过测试的应用: WB, ICC/IF, IP

推荐稀释比: WB: 1/500-1/1000 IF: 1/50-1/200 IP: 1/20

种属反应性: Rabbit

克隆性: Rabbit Monoclonal

克隆编号: R02-318

分子量: Calculated MW: 84 kDa; Observed MW: 72 kDa

亚型: IgG

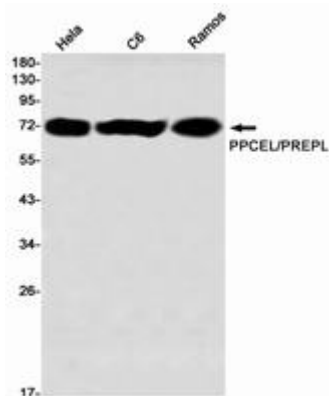
纯化: Affinity Purified

种属反应性: Human, Mouse and Rat

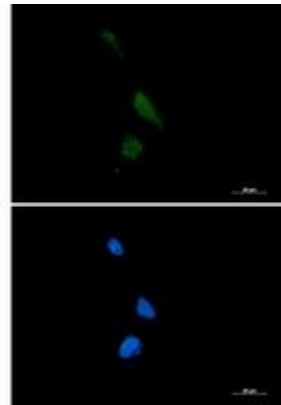
成分: PBS (without Mg²⁺ and Ca²⁺), pH 7.3 containing 50% glycerol, 0.5% BSA and 0.02% sodium azide

研究领域: -

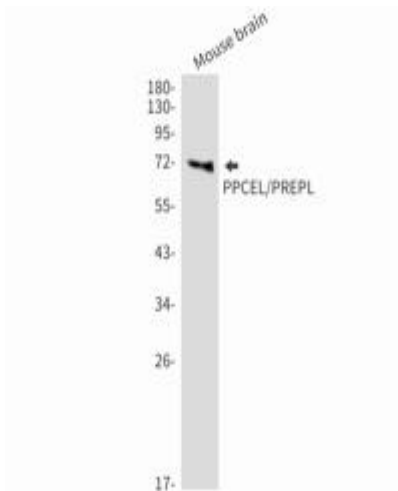
储存和运输: Store at -20°C. Avoid repeated freezing and thawing



Western blot analysis of PPCEL/PREPL in HeLa, C6, Ramos lysates using PPCEL/PREPL antibody



Immunocytochemistry analysis of PPCEL (green) in U87-MG using PPCEL antibody, and DAPI (blue).



Western blot analysis of PPCEL/PREPL in mouse brain lysates using PPCEL/PREPL antibody.