

PP2A ALPHA RABBIT PAB

货号: N225052

产品全名: PP2A alpha 兔多抗

基因符号 PPP2CA; Serine/threonine-protein phosphatase 2A catalytic subunit alpha isoform; PP2A-alpha; Replication protein C; RP-C

UNIPROT ID: P67775

背景: PP2A is the major phosphatase for microtubule-associated proteins (MAPs). PP2A can modulate the activity of phosphorylase B kinase casein kinase 2, mitogen-stimulated S6 kinase, and MAP-2 kinase. Cooperates with SGOL2 to protect centromeric cohesin from separase-mediated cleavage in oocytes specifically during meiosis I (By similarity). Can dephosphorylate SV40 large T antigen and p53/TP53. Activates RAF1 by dephosphorylating it at 'Ser-259'.

抗原: The antiserum was produced against synthesized peptide derived from human PP2A-alpha. AA range:260-309

经过测试的应用: WB,IHC-F,IHC-P,ICC/IF,ELISA

推荐稀释比: WB: 1/500-1/1000 IHC: 1/50-1/100 IF: 1/50-1/200 ELISA: 1/10000

种属反应性: Rabbit

克隆性: Rabbit Polyclonal

分子量: Calculated MW: 36 kDa; Observed MW: 36 kDa

亚型: IgG

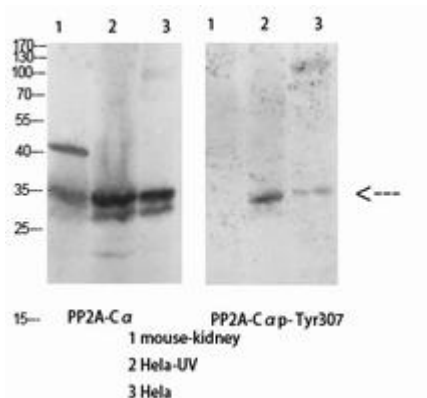
纯化: Affinity Purified

种属反应性: Human, Mouse and Rat

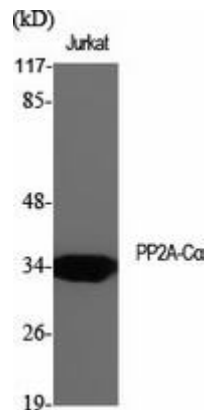
成分: PBS (without Mg²⁺ and Ca²⁺), pH 7.3 containing 50% glycerol, 0.5% BSA and 0.02% sodium azide

研究领域: Cell Biology

储存和运输: Store at -20°C. Avoid repeated freezing and thawing



Western blot analysis of PP2A alpha in various lysates using PP2A alpha antibody.



Western blot analysis of PP2A alpha in various lysates using PP2A alpha antibody.



Western blot analysis of PP2A alpha in A549 lysates using PP2A alpha antibody.