

## POM121 RABBIT PAB

货号: S218937

产品全名: POM121 兔多抗

基因符号: P145; POM121A

**UNIPROT ID:** Q96HA1 (Gene Accession - BC008794)

**背景:** This gene encodes a transmembrane protein that localizes to the inner nuclear membrane and forms a core component of the nuclear pore complex, which mediates transport to and from the nucleus. The encoded protein may anchor this complex to the nuclear envelope. There are multiple related genes and pseudogenes for this gene on chromosomes 5, 7, 15, and 22. Alternatively spliced transcript variants encoding different isoforms have been observed.

**抗原:** Fusion protein of human POM121

**经过测试的应用:** ELISA, IHC

**推荐稀释比:** IHC: 50-300; ELISA: 5000-10000

**种属反应性:** Rabbit

**克隆性:** Rabbit Polyclonal

**亚型:** Immunogen-specific rabbit IgG

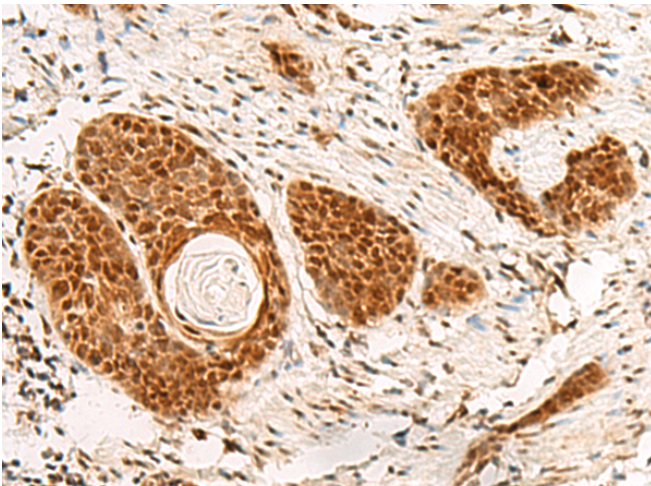
**纯化:** Antigen affinity purification

**种属反应性:** Human

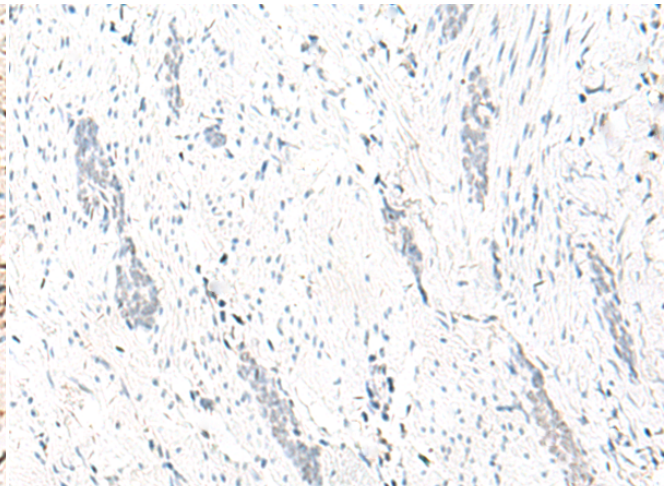
**成分:** PBS (without Mg<sup>2+</sup> and Ca<sup>2+</sup>), pH 7.4, 150 mM NaCl, 0.05% Sodium Azide and 40% glycerol

**研究领域:** Signal Transduction

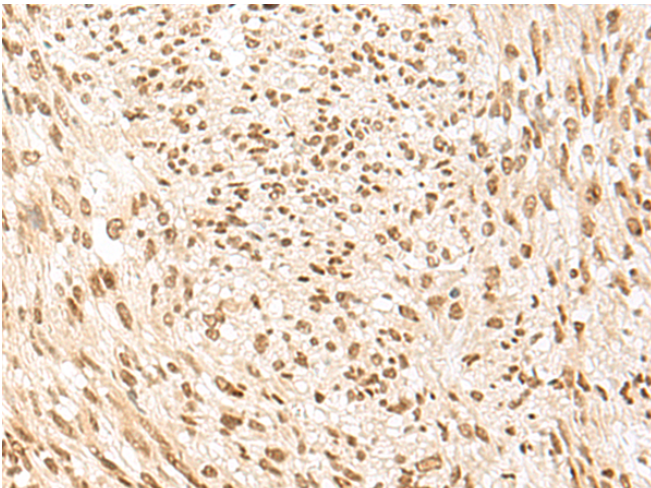
**储存和运输:** Store at -20°C. Avoid repeated freezing and thawing



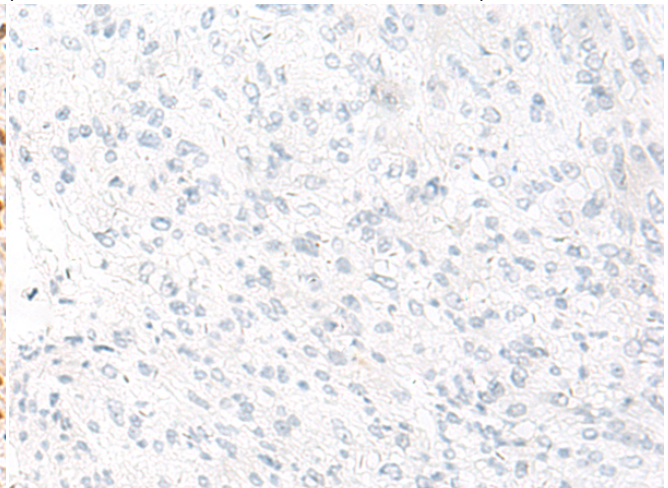
Immunohistochemistry analysis of paraffin embedded Human esophagus cancer tissue using 218937(POM121 Antibody) at a dilution of 1/75(Nucleus).



In comparison with the IHC on the left, the same paraffin-embedded Human esophagus cancer tissue is first treated with the fusion protein and then with 218937(Anti-POM121 Antibody) at dilution 1/75.



The image on the left is immunohistochemistry of paraffin-embedded Human liver cancer tissue using 218937(Anti-POM121 Antibody) at a dilution of 1/75.



In comparison with the IHC on the left, the same paraffin-embedded Human liver cancer tissue is first treated with fusion protein and then with D225542(Anti-POM121 Antibody) at dilution 1/75.



# Product Description

Pioneering GTPase and Oncogene Product Development since 2010

---