

POLYCOMB PROTEIN SUZ12 RABBIT MAB

货号: N263566

产品全名: Polycomb Protein SUZ12 兔单克隆抗体

基因符号 SUZ12; CHET9; JAZ1; KIAA0160; Polycomb protein SUZ12; Chromatin precipitated E2F target 9 protein; ChET 9 protein; Joined to JAZF1 protein; Suppressor of zeste 12 protein homolog

UNIPROT ID: Q15022

背景: Polycomb group (PcG) protein. Component of the PRC2/EED-EZH2 complex, which methylates 'Lys-9' (H3K9me) and 'Lys-27' (H3K27me) of histone H3, leading to transcriptional repression of the affected target gene. The PRC2/EED-EZH2 complex may also serve as a recruiting platform for DNA methyltransferases, thereby linking two epigenetic repression systems.

抗原: A synthetic peptide of human SUZ12

经过测试的应用: WB,IP

推荐稀释比: WB: 1/500-1/1000 IP: 1/20

种属反应性: Rabbit

克隆性: Rabbit Monoclonal

克隆编号: R07-6C3

分子量: Calculated MW: 83 kDa; Observed MW: 83 kDa

亚型: IgG

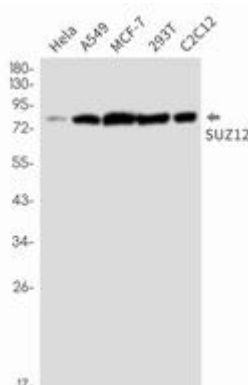
纯化: Affinity Purified

种属反应性: Human,Mouse

成分: PBS (without Mg²⁺ and Ca²⁺), pH 7.3 containing 50% glycerol, 0.5% BSA and 0.02% sodium azide

研究领域: Epigenetics and Nuclear Signaling

储存和运输: Store at -20°C. Avoid repeated freezing and thawing



Western blot analysis of SUZ12 in HeLa, A549, MCF-7, 293T, C2C12 lysates using Polycomb Protein SUZ12 antibody.



Product Description

Pioneering GTPase and Oncogene Product Development since 2010
