

POLR1C RABBIT PAB

货号: S218650

产品全名: POLR1C 兔多抗

基因符号 AC40; RPA5; TCS3; HLD11; RPA39; RPA40; RPAC1; RPC40

UNIPROT ID: O15160 (Gene Accession - BC008863)

背景: The protein encoded by this gene is a subunit of both RNA polymerase I and RNA polymerase III complexes. The encoded protein is part of the Pol core element. Mutations in this gene have been associated with Treacher Collins syndrome (TCS) and hypomyelinating leukodystrophy II. Alternative splicing results in multiple transcript variants.

抗原: Fusion protein of human POLR1C

经过测试的应用: ELISA, IHC

推荐稀释比: IHC: 25-100; ELISA: 5000-10000

种属反应性: Rabbit

克隆性: Rabbit Polyclonal

亚型: Immunogen-specific rabbit IgG

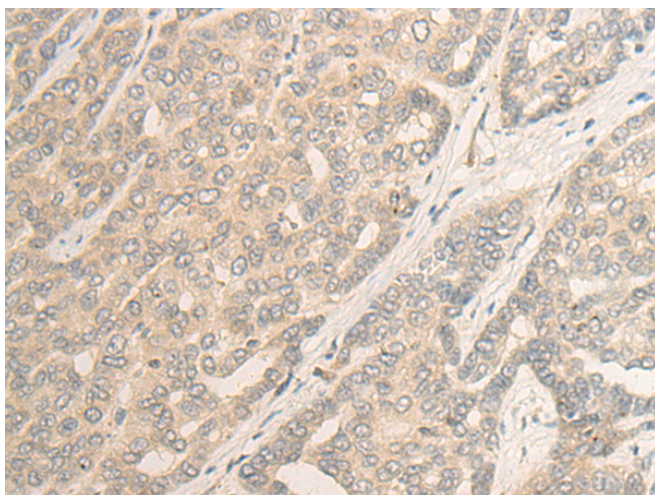
纯化: Antigen affinity purification

种属反应性: Human, Mouse

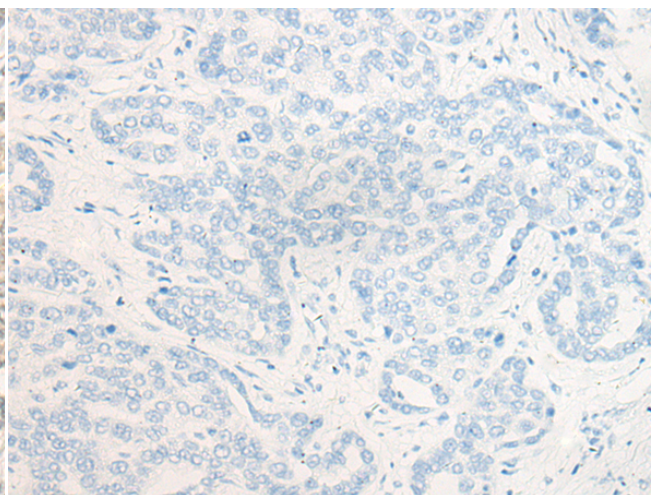
成分: PBS (without Mg²⁺ and Ca²⁺), pH 7.4, 150 mM NaCl, 0.05% Sodium Azide and 40% glycerol

研究领域: Epigenetics and Nuclear Signaling

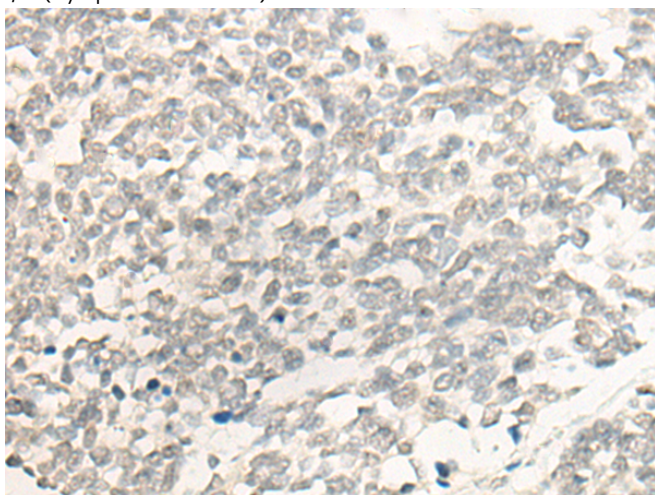
储存和运输: Store at -20°C. Avoid repeated freezing and thawing



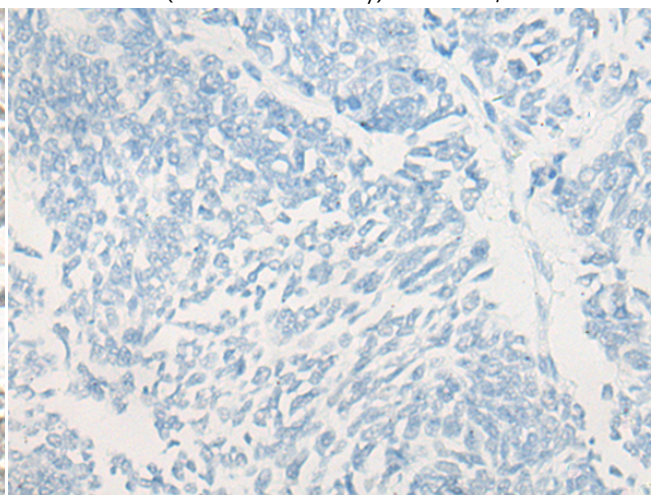
Immunohistochemistry analysis of paraffin embedded Human liver cancer tissue using 218650 (POLR1C Antibody) at a dilution of 1/20 (Cytoplasm or Nucleus).



In comparison with the IHC on the left, the same paraffin-embedded Human liver cancer tissue is first treated with the fusion protein and then with 218650 (Anti-POLR1C Antibody) at dilution 1/20.



The image on the left is immunohistochemistry of paraffin-embedded Human lung cancer tissue using 218650 (Anti-POLR1C Antibody) at a dilution of 1/20.



In comparison with the IHC on the left, the same paraffin-embedded Human lung cancer tissue is first treated with fusion protein and then with D224872 (Anti-POLR1C Antibody) at dilution 1/20.



Product Description

Pioneering GTPase and Oncogene Product Development since 2010
