

## POLDIP3 RABBIT PAB

货号: S218196

产品全名: POLDIP3 兔多抗

基因符号: SKAR; PDIP3; PDIP46

**UNIPROT ID:** Q9BY77 (Gene Accession - BC019643 )

**背景:** This gene encodes an RRM (RNA recognition motif)-containing protein that participates in the regulation of translation by recruiting ribosomal protein S6 kinase beta-1 to mRNAs. Alternative splicing results in multiple transcript variants.

**抗原:** Fusion protein of human POLDIP3

**经过测试的应用:** ELISA, WB, IHC

**推荐稀释比:** IHC: 50-200;WB: 500-2000;ELISA: 5000-10000

**种属反应性:** Rabbit

**克隆性:** Rabbit Polyclonal

**亚型:** Immunogen-specific rabbit IgG

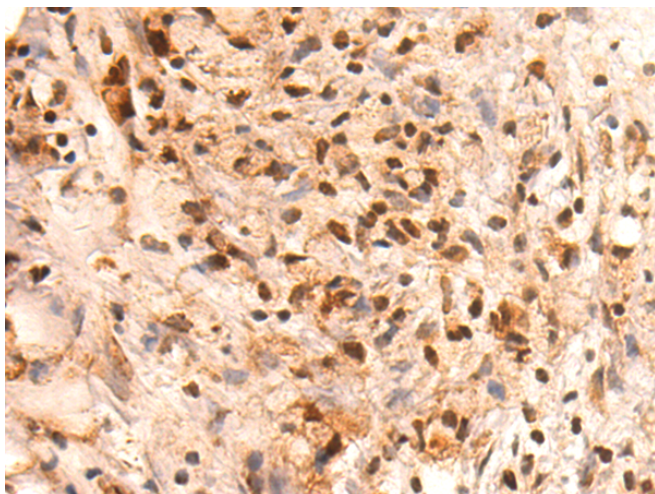
**纯化:** Antigen affinity purification

**种属反应性:** Human, Mouse

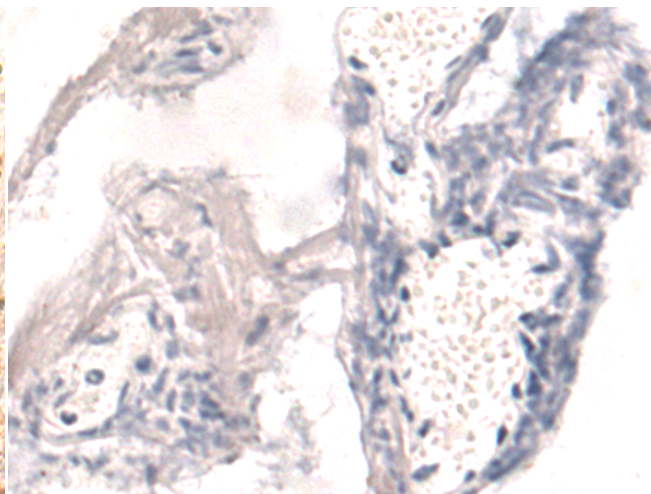
**成分:** PBS (without Mg<sup>2+</sup> and Ca<sup>2+</sup>), pH 7.4, 150 mM NaCl, 0.05% Sodium Azide and 40% glycerol

**研究领域:** Epigenetics and Nuclear Signaling

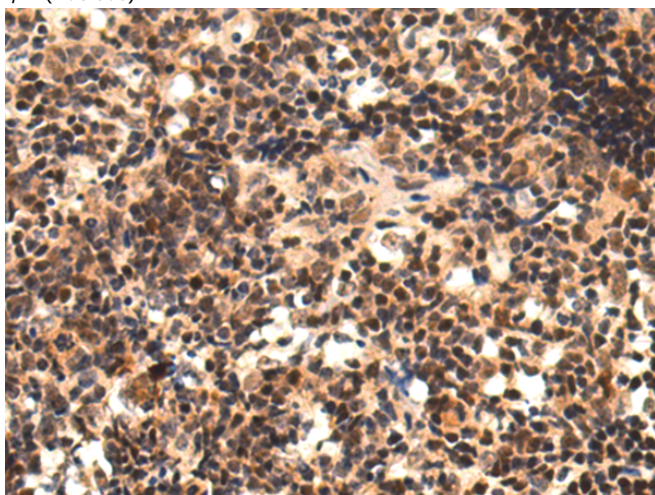
**储存和运输:** Store at -20°C. Avoid repeated freezing and thawing



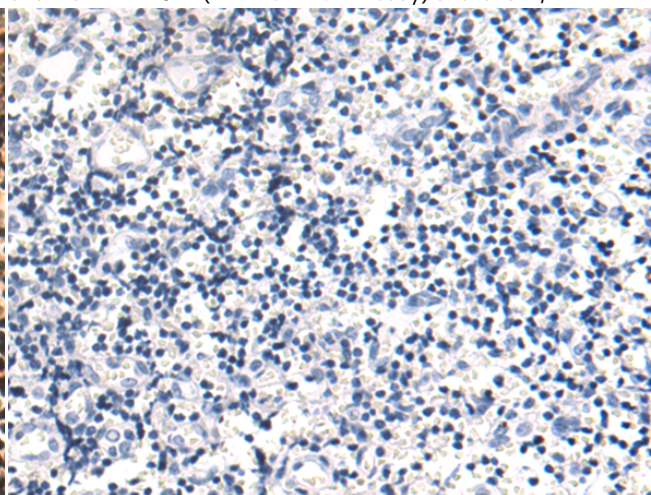
Immunohistochemistry analysis of paraffin embedded Human gastric cancer tissue using 218196(POLDIP3 Antibody) at a dilution of 1/45(Nucleus).



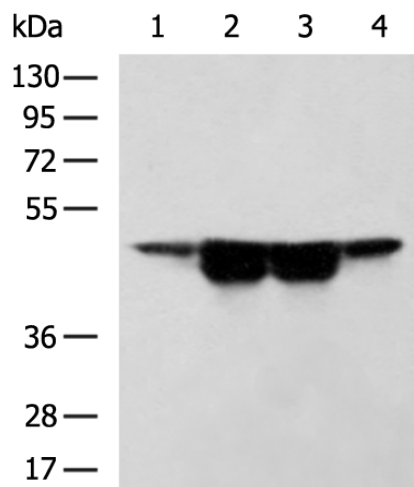
In comparison with the IHC on the left, the same paraffin-embedded Human gastric cancer tissue is first treated with the fusion protein and then with 218196(Anti-POLDIP3 Antibody) at dilution 1/45.



The image on the left is immunohistochemistry of paraffin-embedded Human thyroid cancer tissue using 218196(Anti-POLDIP3 Antibody) at a dilution of 1/45.



In comparison with the IHC on the left, the same paraffin-embedded Human thyroid cancer tissue is first treated with fusion protein and then with D223915(Anti-POLDIP3 Antibody) at dilution 1/45.



Gel: 8%SDS-PAGE, Lysate: 40 µg;  
 Lane 1-4: Mouse brain tissue, Jurkat, RAW264.7, C2C12 cell lysates;  
 Primary antibody: 218196(POLDIP3 Antibody) at dilution 1/300;  
 Secondary antibody: HRP-conjugated Goat anti rabbit IgG at 1/5000 dilution;  
 Exposure time: 30 seconds



# Product Description

Pioneering GTPase and Oncogene Product Development since 2010

---