

POLD1 RABBIT PAB

货号: S213103

产品全名: POLD1 兔多抗

基因符号: CDC2; MDPL; POLD; CRCS10

UNIPROT ID: P28340 (Gene Accession - BC008800)

背景: This gene encodes the 125-kDa catalytic subunit of DNA polymerase delta. DNA polymerase delta possesses both polymerase and 3' to 5' exonuclease activity and plays a critical role in DNA replication and repair. Alternatively spliced transcript variants have been observed for this gene, and a pseudogene of this gene is located on the long arm of chromosome 6. [provided by RefSeq, Mar 2012]

抗原: Fusion protein of human POLD1

经过测试的应用: ELISA, WB, IHC

推荐稀释比: IHC: 150-300;WB: 500-2000;ELISA: 5000-10000

种属反应性: Rabbit

克隆性: Rabbit Polyclonal

亚型: Immunogen-specific rabbit IgG

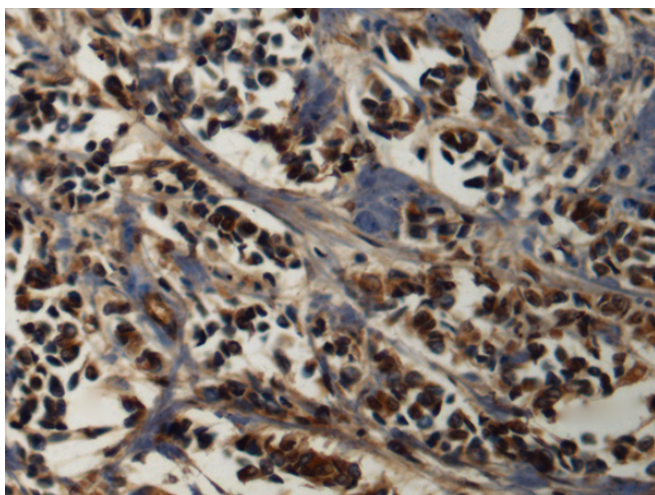
纯化: Antigen affinity purification

种属反应性: Human, Mouse, Rat

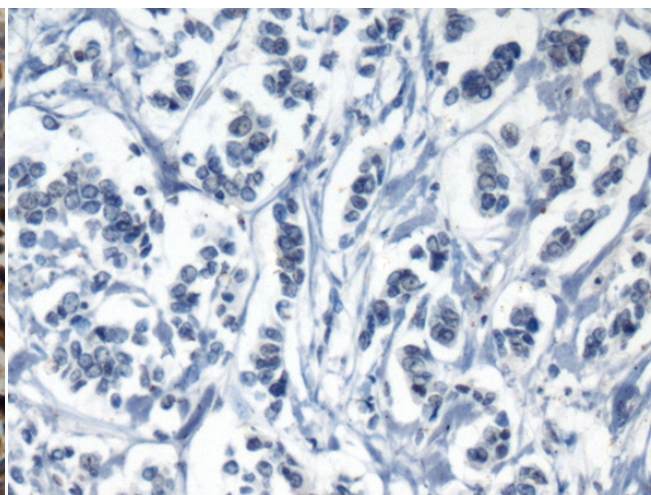
成分: PBS (without Mg²⁺ and Ca²⁺), pH 7.4, 150 mM NaCl, 0.05% Sodium Azide and 40% glycerol

研究领域: Epigenetics and Nuclear Signaling

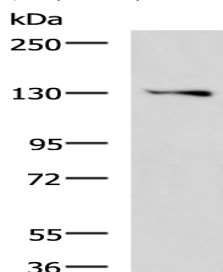
储存和运输: Store at -20°C. Avoid repeated freezing and thawing



Immunohistochemistry analysis of paraffin embedded Human breast cancer tissue using 213103 (POLD1 Antibody) at a dilution of 1/160 (Nucleus).



In comparison with the IHC on the left, the same paraffin-embedded Human breast cancer tissue is first treated with the fusion protein and then with 213103 (Anti-POLD1 Antibody) at dilution 1/160.



Gel: 6% SDS-PAGE, Lysate: 40 µg;

Lane: K562 cell lysate;

Primary antibody: 213103 (POLD1 Antibody) at dilution 1/1100;

Secondary antibody: HRP-conjugated Goat anti rabbit IgG at 1/5000 dilution;

Exposure time: 3 minutes