

POLD1 RABBIT MAB

货号: N261616

产品全名: POLD1 兔单克隆抗体

基因符号 CDC2; CRCSI0; MDPL; POLD; POLD1

UNIPROT ID: P28340

背景: Possesses two enzymatic activities: DNA synthesis (polymerase) and an exonucleolytic activity that degrades single stranded DNA in the 3'-to 5'-direction. Required with its accessory proteins (proliferating cell nuclear antigen (PCNA) and replication factor C (RFC) or activator 1) for leading strand synthesis. Also involved in completing Okazaki fragments initiated by the DNA polymerase alpha/primase complex.

抗原: A synthetic peptide of human DNA Polymerase delta, catalytic subunit

经过测试的应用: WB,IHC-P,ICC/IF,FC

推荐稀释比: WB: 1/500-1/1000 IF: 1/50-1/200

种属反应性: Rabbit

克隆性: Rabbit Monoclonal

克隆编号: R05-3H1

分子量: Calculated MW: 124 kDa; Observed MW: 124 kDa

亚型: IgG

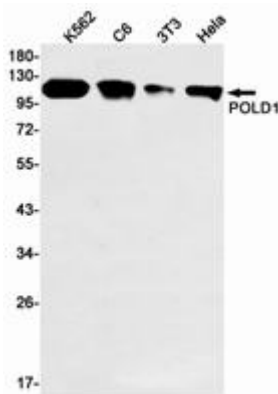
纯化: Affinity Purified

种属反应性: Human, Mouse and Rat

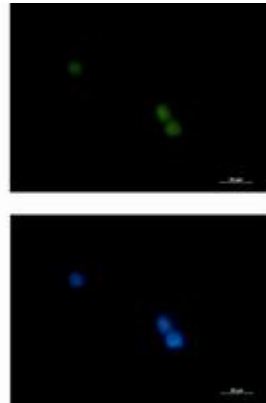
成分: PBS (without Mg²⁺ and Ca²⁺), pH 7.3 containing 50% glycerol, 0.5% BSA and 0.02% sodium azide

研究领域: Epigenetics and Nuclear Signaling

储存和运输: Store at -20°C. Avoid repeated freezing and thawing



Western blot analysis of POLD1 in K562, C6, 3T3, HeLa lysates using POLD1 antibody.



Immunocytochemistry analysis of POLD1 (green) in K562 using POLD1 antibody, and DAPI (blue).