

## POLB RABBIT PAB

货号: S219468

产品全名: POLB 兔多抗

基因符号

**UNIPROT ID:** P06746 (Gene Accession - BC106909)

**背景:** The protein encoded by this gene is a DNA polymerase involved in base excision and repair, also called gap-filling DNA synthesis. The encoded protein, acting as a monomer, is normally found in the cytoplasm, but it translocates to the nucleus upon DNA damage. Several transcript variants of this gene exist, but the full-length nature of only one has been described to date. [provided by RefSeq, Sep 2011]

**抗原:** Fusion protein of human POLB

**经过测试的应用:** ELISA, WB, IHC

**推荐稀释比:** IHC: 100-300;WB: 500-2000;ELISA: 5000-10000

**种属反应性:** Rabbit

**克隆性:** Rabbit Polyclonal

**亚型:** Immunogen-specific rabbit IgG

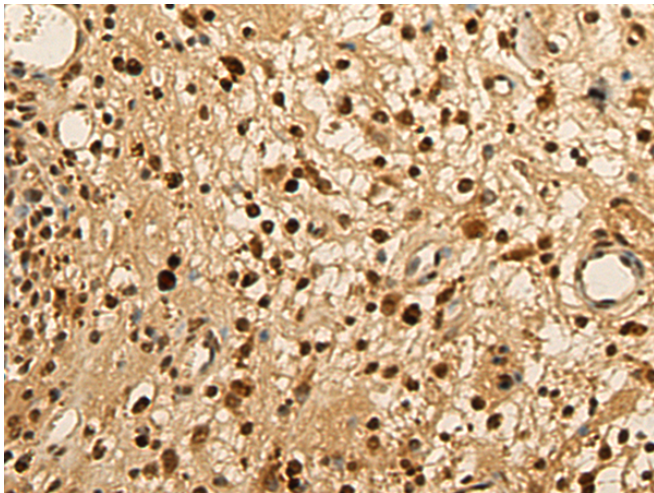
**纯化:** Antigen affinity purification

**种属反应性:** Human, Mouse, Rat

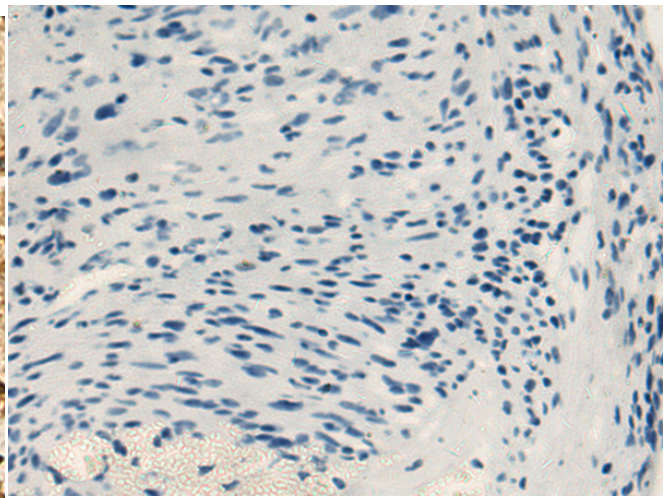
**成分:** PBS (without Mg<sup>2+</sup> and Ca<sup>2+</sup>), pH 7.4, 150 mM NaCl, 0.05% Sodium Azide and 40% glycerol

**研究领域:** Epigenetics and Nuclear Signaling

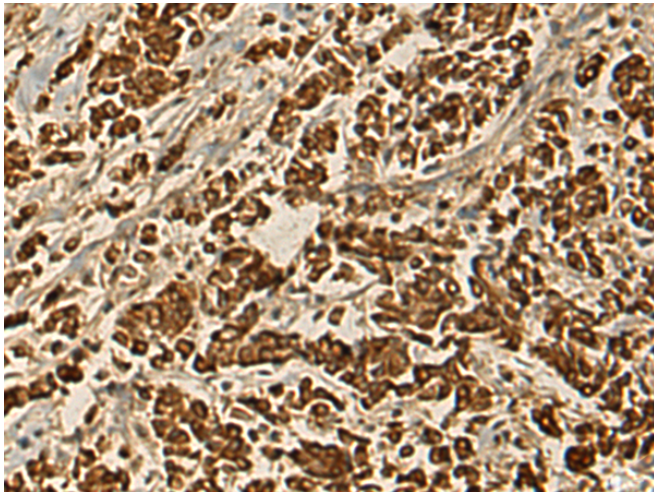
**储存和运输:** Store at -20°C. Avoid repeated freezing and thawing



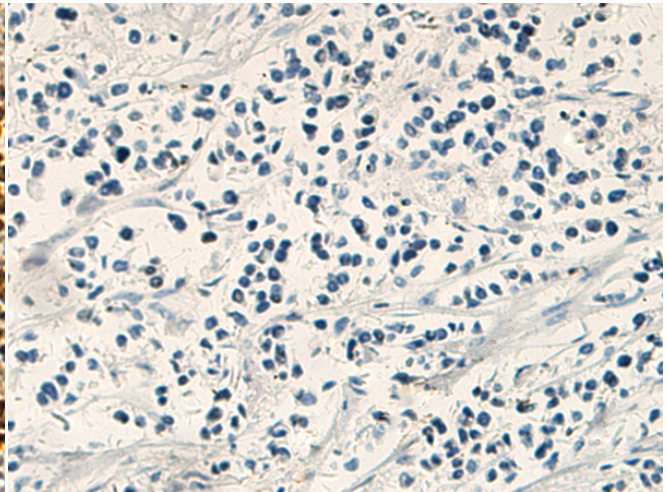
Immunohistochemistry analysis of paraffin embedded Human brain tissue using 219468(POLB Antibody) at a dilution of 1/135(Nucleus).



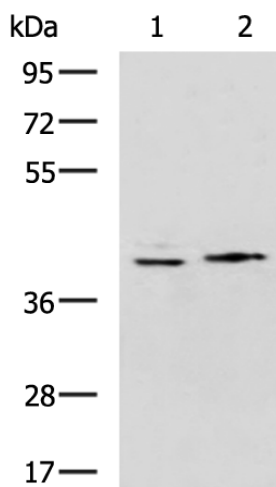
In comparison with the IHC on the left, the same paraffin-embedded Human brain tissue is first treated with the fusion protein and then with 219468(Anti-POLB Antibody) at dilution 1/135.



The image on the left is immunohistochemistry of paraffin-embedded Human breast cancer tissue using 219468(Anti-POLB Antibody) at a dilution of 1/135.



In comparison with the IHC on the left, the same paraffin-embedded Human breast cancer tissue is first treated with fusion protein and then with D227211(Anti-POLB Antibody) at dilution 1/135.



Gel: 8%SDS-PAGE, Lysate: 40 µg;  
Lane 1-2: K562, Hela cell lysates;  
Primary antibody: 219468(POLB Antibody) at dilution 1/800;  
Secondary antibody: HRP-conjugated Goat anti rabbit IgG at 1/5000 dilution;  
Exposure time: 1 minute



# Product Description

Pioneering GTPase and Oncogene Product Development since 2010

---