

PMCA1 RABBIT MAB

货号: N262737

产品全名: PMCA1 兔单克隆抗体

基因符号 ATP2B1; PMCA1

UNIPROT ID: P20020

背景: This magnesium-dependent enzyme catalyzes the hydrolysis of ATP coupled with the transport of calcium out of the cell.

抗原: A synthetic peptide of human PMCA1

经过测试的应用: WB,IHC-P

推荐稀释比: WB: 1/500-1/1000 IHC: 1/50-1/100

种属反应性: Rabbit

克隆性: Rabbit Monoclonal

克隆编号: R02-8C5

分子量: Calculated MW: 135 kDa; Observed MW: 130-250 kDa

亚型: IgG

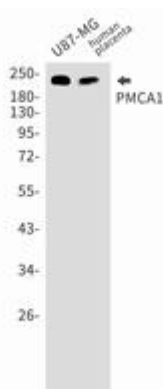
纯化: Affinity Purified

种属反应性: Human, Mouse and Rat

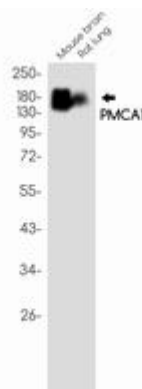
成分: PBS (without Mg²⁺ and Ca²⁺), pH 7.3 containing 50% glycerol, 0.5% BSA and 0.02% sodium azide

研究领域: Signal Transduction

储存和运输: Store at -20°C. Avoid repeated freezing and thawing



Western blot analysis of PMCA1 in U87-MG, Human placenta lysates using PMCA1 antibody.



Western blot analysis of PMCA1 in mouse brain, rat lung lysates using PMCA1 antibody.



Product Description

Pioneering GTPase and Oncogene Product Development since 2010
