

PLXND1 RABBIT PAB

货号: S220822

产品全名: PLXND1 兔多抗

基因符号: CHTD9; PLEXD1

UNIPROT ID: Q9Y4D7 (Gene Accession - NP_055918)

背景: Enables protein domain specific binding activity. Predicted to be involved in several processes, including endothelial cell migration; nervous system development; and regulation of angiogenesis. Predicted to act upstream of or within several processes, including circulatory system development; dichotomous subdivision of terminal units involved in salivary gland branching; and positive regulation of protein binding activity. Located in lamellipodium.

抗原: Synthetic peptide of human PLXND1

经过测试的应用: ELISA, WB, IHC

推荐稀释比: IHC: 50-200;WB: 200-1000;ELISA: 2000-5000

种属反应性: Rabbit

克隆性: Rabbit Polyclonal

亚型: Immunogen-specific rabbit IgG

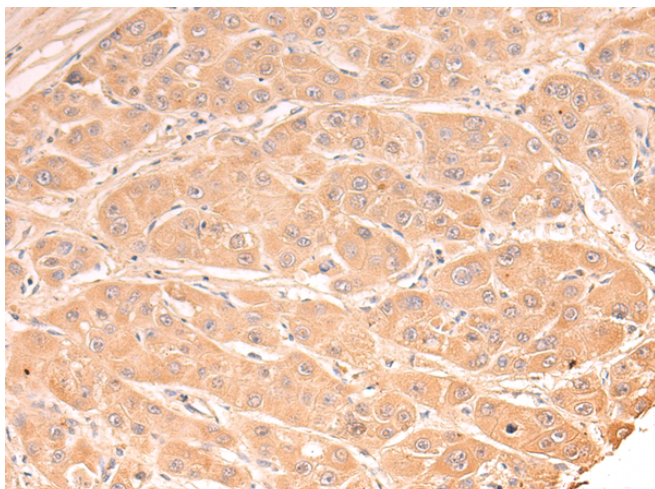
纯化: Antigen affinity purification

种属反应性: Human, Mouse

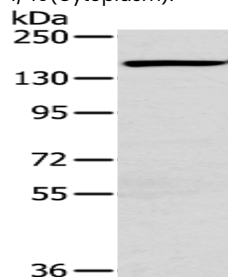
成分: PBS (without Mg²⁺ and Ca²⁺), pH 7.4, 150 mM NaCl, 0.05% Sodium Azide and 40% glycerol

研究领域: Cardiovascular

储存和运输: Store at -20°C. Avoid repeated freezing and thawing



Immunohistochemistry analysis of paraffin-embedded Human liver cancer tissue using 220822(PLXND1 Antibody) at a dilution of 1/40(Cytoplasm).



Gel: 6%SDS-PAGE, Lysate: 40 µg;

Lane: Hbmecc cell lysate;

Primary antibody: 220822(PLXND1 Antibody) at dilution 1/200;

Secondary antibody: Goat anti rabbit IgG at 1/8000 dilution;

Exposure time: 10 minutes

Immunohistochemistry analysis of paraffin-embedded Human prostate cancer tissue using 220822(Anti-PLXND1 Antibody) at a dilution of 1/40.