

PLXNB2 RABBIT PAB

货号: S220821

产品全名: PLXNB2 兔多抗

基因符号: MM1; PLEXB2; Nbla00445; dJ402G11.3

UNIPROT ID: O15031 (Gene Accession - NP_036533)

背景: Members of the B class of plexins, such as PLXNB2 are transmembrane receptors that participate in axon guidance and cell migration in response to semaphorins (Perrot et al. (2002) [PubMed 12183458]).

抗原: Synthetic peptide of human PLXNB2

经过测试的应用: ELISA, IHC

推荐稀释比: IHC: 25-100; ELISA: 2000-5000

种属反应性: Rabbit

克隆性: Rabbit Polyclonal

亚型: Immunogen-specific rabbit IgG

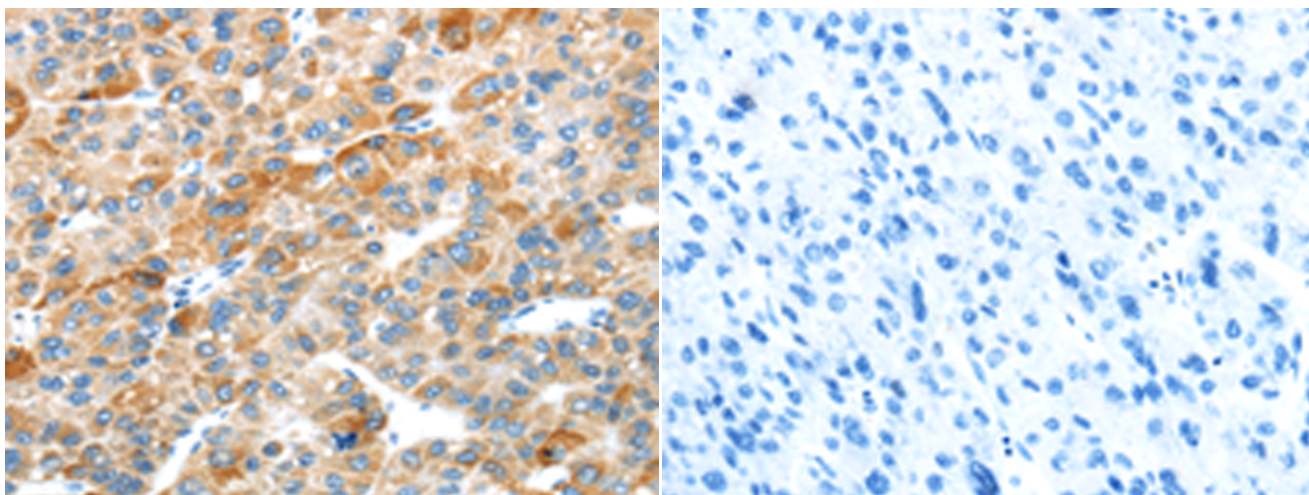
纯化: Antigen affinity purification

种属反应性: Human, Mouse

成分: PBS (without Mg²⁺ and Ca²⁺), pH 7.4, 150 mM NaCl, 0.05% Sodium Azide and 40% glycerol

研究领域: Neuroscience

储存和运输: Store at -20°C. Avoid repeated freezing and thawing



Immunohistochemistry analysis of paraffin embedded Human liver cancer tissue using 220821(PLXNB2 Antibody) at a dilution of 1/20(Cell membrane). In comparison with the IHC on the left, the same paraffin-embedded Human liver cancer tissue is first treated with the synthetic peptide and then with 220821(Anti-PLXNB2 Antibody) at dilution 1/20.