

PLTP RABBIT PAB

货号: S217701

产品全名: PLTP 兔多抗

基因符号: BPIFE; HDLCQ9

UNIPROT ID: P55058 (Gene Accession - BC019847)

背景: The protein encoded by this gene is one of at least two lipid transfer proteins found in human plasma. The encoded protein transfers phospholipids from triglyceride-rich lipoproteins to high density lipoprotein (HDL). In addition to regulating the size of HDL particles, this protein may be involved in cholesterol metabolism. At least two transcript variants encoding different isoforms have been found for this gene.

抗原: Fusion protein of human PLTP

经过测试的应用: ELISA, WB, IHC

推荐稀释比: IHC: 100-200;WB: 500-2000;ELISA: 5000-10000

种属反应性: Rabbit

克隆性: Rabbit Polyclonal

亚型: Immunogen-specific rabbit IgG

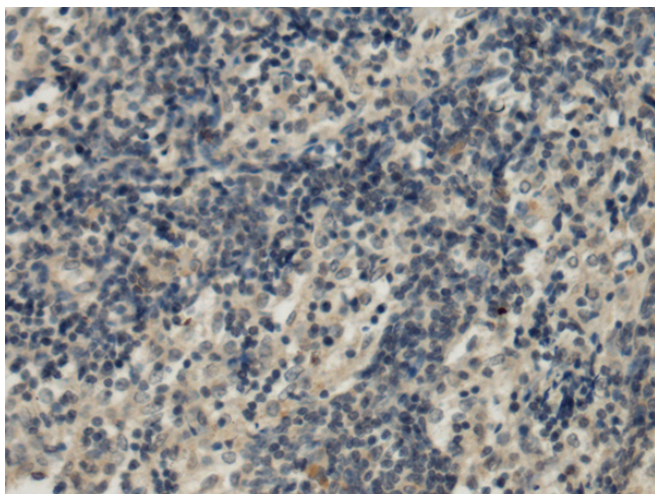
纯化: Antigen affinity purification

种属反应性: Human, Mouse

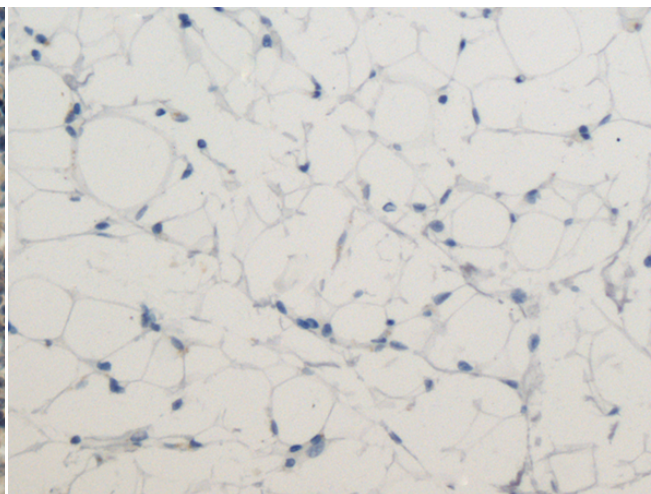
成分: PBS (without Mg²⁺ and Ca²⁺), pH 7.4, 150 mM NaCl, 0.05% Sodium Azide and 40% glycerol

研究领域: Metabolism, Cancer, Cardiovascular

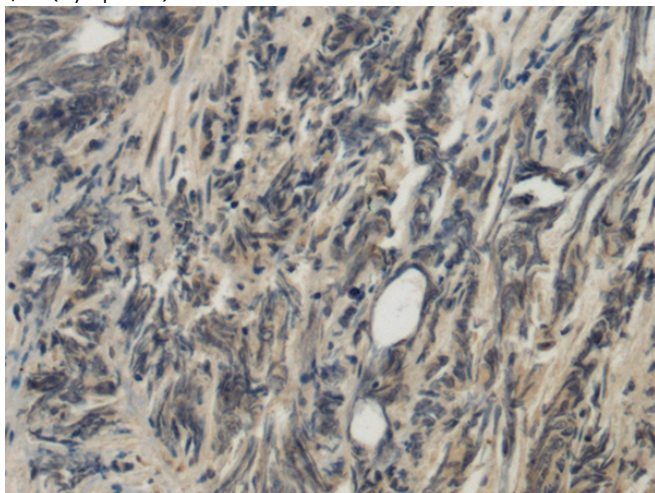
储存和运输: Store at -20°C. Avoid repeated freezing and thawing



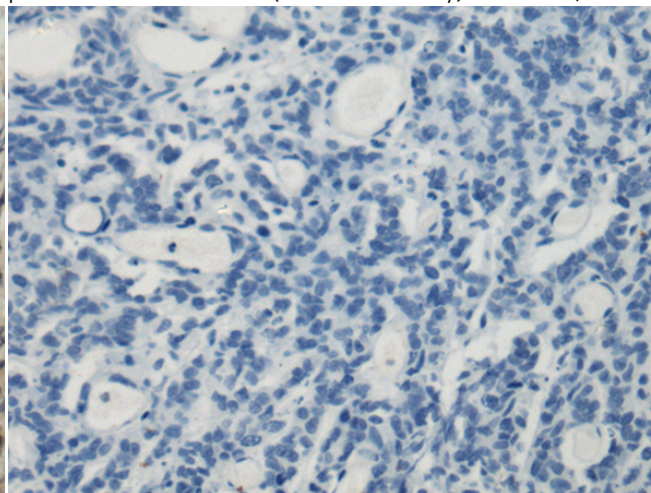
Immunohistochemistry analysis of paraffin embedded Human esophagus cancer tissue using 217701(PLTP Antibody) at a dilution of 1/100(Cytoplasm).



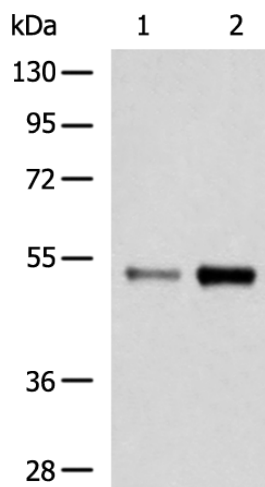
In comparison with the IHC on the left, the same paraffin-embedded Human esophagus cancer tissue is first treated with the fusion protein and then with 217701(Anti-PLTP Antibody) at dilution 1/100.



The image on the left is immunohistochemistry of paraffin-embedded Human prostate cancer tissue using 217701(Anti-PLTP Antibody) at a dilution of 1/100.



In comparison with the IHC on the left, the same paraffin-embedded Human prostate cancer tissue is first treated with fusion protein and then with D222892(Anti-PLTP Antibody) at dilution 1/100.



Gel: 8%SDS-PAGE, Lysate: 40 µg;
 Lane 1-2: K562 and 293T cell lysates;
 Primary antibody: 217701(PLTP Antibody) at dilution 1/800;
 Secondary antibody: HRP-conjugated Goat anti rabbit IgG at 1/5000 dilution;
 Exposure time: 5 minutes



Product Description

Pioneering GTPase and Oncogene Product Development since 2010
