

PLLP RABBIT PAB

货号: S219527

产品全名: PLLP 兔多抗

基因符号: PMLP; TM4SF11

UNIPROT ID: Q9Y342 (Gene Accession - BC002760)

背景: Appears to be involved in myelination. Could also participate in ion transport events as addition of plasmolipin to lipid bilayers induces the formation of ion channels, which are voltage-dependent and K⁺-selective (By similarity).

抗原: Fusion protein of human PLLP

经过测试的应用: ELISA, IHC

推荐稀释比: IHC: 50-100; ELISA: 5000-10000

种属反应性: Rabbit

克隆性: Rabbit Polyclonal

亚型: Immunogen-specific rabbit IgG

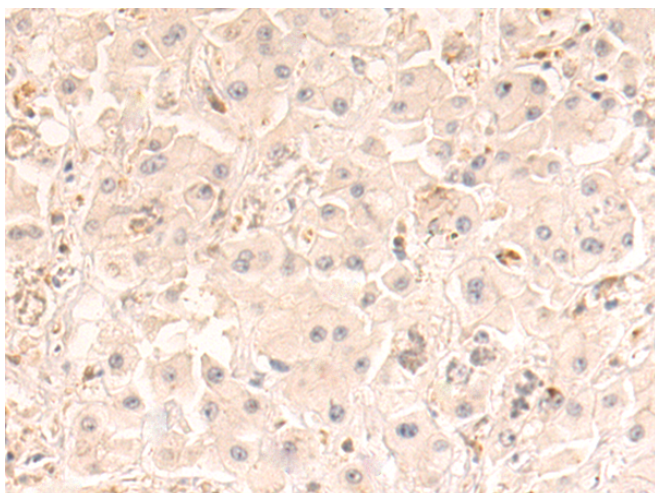
纯化: Antigen affinity purification

种属反应性: Human, Mouse, Rat

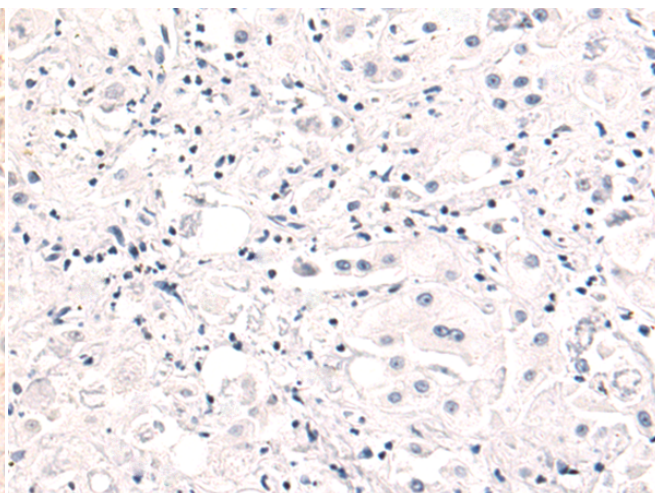
成分: PBS (without Mg²⁺ and Ca²⁺), pH 7.4, 150 mM NaCl, 0.05% Sodium Azide and 40% glycerol

研究领域: Neuroscience

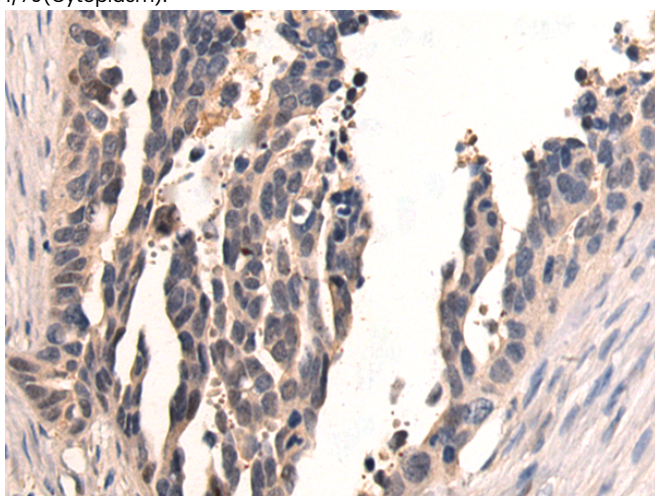
储存和运输: Store at -20°C. Avoid repeated freezing and thawing



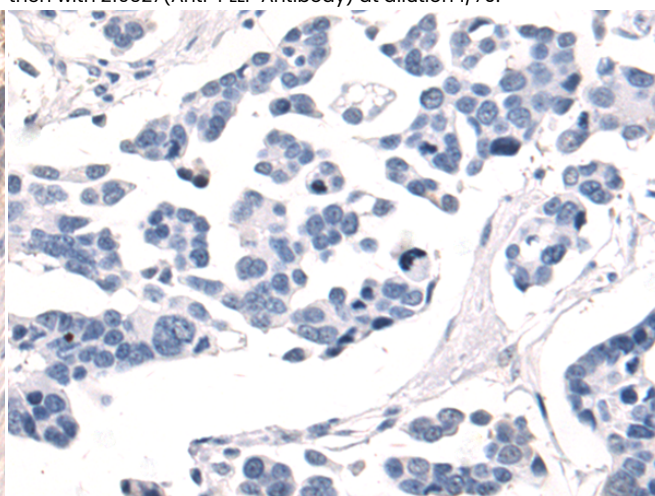
Immunohistochemistry analysis of paraffin embedded Human liver cancer tissue using 219527(PLLP Antibody) at a dilution of 1/70(Cytoplasm).



In comparison with the IHC on the left, the same paraffin-embedded Human liver cancer tissue is first treated with the fusion protein and then with 219527(Anti-PLLP Antibody) at dilution 1/70.



The image on the left is immunohistochemistry of paraffin-embedded Human colorectal cancer tissue using 219527(Anti-PLLP Antibody) at a dilution of 1/70.



In comparison with the IHC on the left, the same paraffin-embedded Human colorectal cancer tissue is first treated with fusion protein and then with D227517(Anti-PLLP Antibody) at dilution 1/70.



Product Description

Pioneering GTPase and Oncogene Product Development since 2010
