

PLK1 RABBIT MAB

货号: N262735

产品全名: PLK1 兔单克隆抗体

基因符号 PLK1; PLK; Serine/threonine-protein kinase PLK1; Polo-like kinase 1; PLK-1; Serine/threonine-protein kinase 13; STPK13

UNIPROT ID: P53350

背景: Required for recovery after DNA damage checkpoint and entry into mitosis. Required for kinetochore localization of BUB1B. Phosphorylates SGOL1. Required for spindle pole localization of isoform 3 of SGOL1 and plays a role in regulating its centriole cohesion function. Phosphorylates BORA, and thereby promotes the degradation of BORA. Contributes to the regulation of AURKA function. Regulates TP53 stability through phosphorylation of TOPORS.

抗原: A synthetic peptide of human PLK1

经过测试的应用: WB, ICC/IF, IP

推荐稀释比: WB: 1/500-1/1000 IF: 1/50-1/200 IP: 1/20

种属反应性: Rabbit

克隆性: Rabbit Monoclonal

克隆编号: R07-3E0

分子量: Calculated MW: 68 kDa; Observed MW: 68 kDa

亚型: IgG

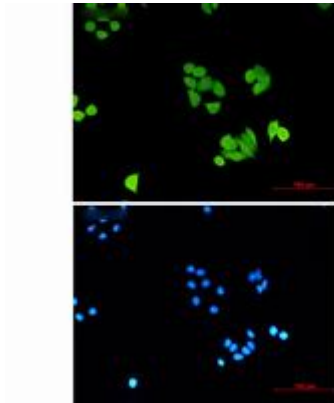
纯化: Affinity Purified

种属反应性: Human, Rat

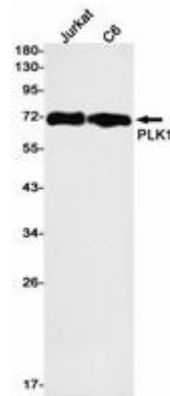
成分: PBS (without Mg²⁺ and Ca²⁺), pH 7.3 containing 50% glycerol, 0.5% BSA and 0.02% sodium azide

研究领域: Cell Biology

储存和运输: Store at -20°C. Avoid repeated freezing and thawing



Immunocytochemistry analysis of PLK1 (green) in Hela using PLK1 antibody, and DAPI (blue)



Western blot analysis of PLK1 in Jurkat, C6 lysates using PLK1 antibody.