

PLGLB2 RABBIT PAB

货号: S218790

产品全名: PLGLB2 兔多抗

基因符号: PLGP1

UNIPROT ID: Q02325 (Gene Accession - BC005379)

背景: Cleavage of the serine proteinase plasminogen to form plasmin is the central event in the dissolution of blood clots by the fibrinolytic system. Within the fibrinolytic cascade, the serine proteinases urokinase-type plasminogen activator (uPA) and tissue-type plasminogen activator (tPA) activate the proenzyme plasminogen by cleaving plasminogen to form the fibrinolytically active enzyme plasmin. PLGLB2 (plasminogen-like B2), also known as PLGP1, is a 96 amino acid protein that resembles the N-terminal plasminogen activation peptide, which is released from plasminogen during conversion to plasmin. PLGLB2 may bind to lysine binding sites present in the kringle structures of plasminogen, an event that interferes with the binding of fibrin or α -2 antiplasmin to plasminogen and may result in the localization of activity at sites necessary for extracellular matrix destruction.

抗原: Fusion protein of human PLGLB2

经过测试的应用: ELISA, IHC

推荐稀释比: IHC: 50-300; ELISA: 5000-10000

种属反应性: Rabbit

克隆性: Rabbit Polyclonal

亚型: Immunogen-specific rabbit IgG

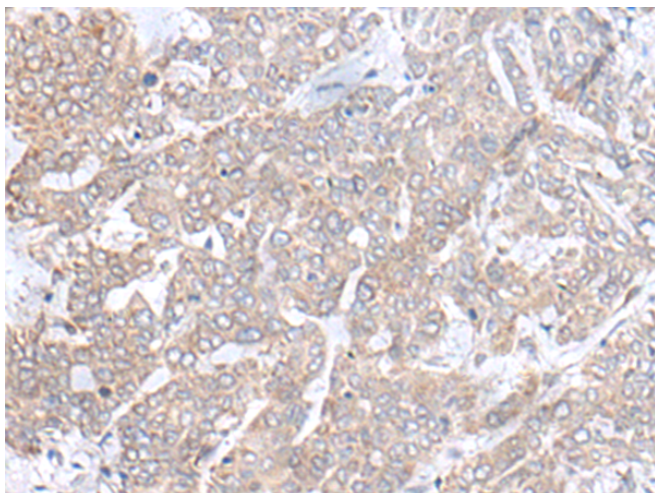
纯化: Antigen affinity purification

种属反应性: Human

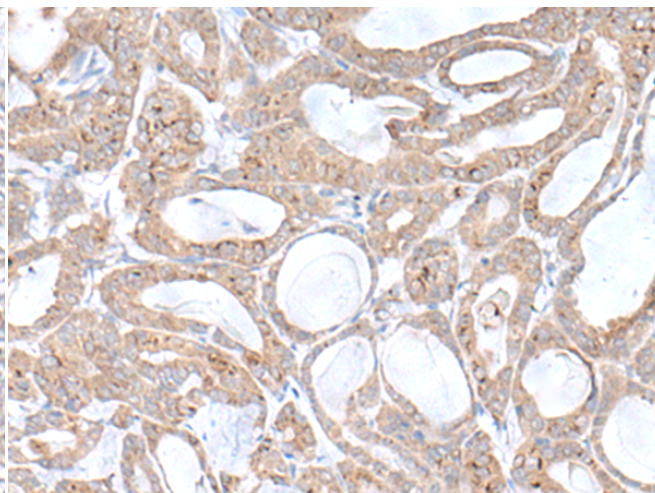
成分: PBS (without Mg²⁺ and Ca²⁺), pH 7.4, 150 mM NaCl, 0.05% Sodium Azide and 40% glycerol

研究领域: Signal Transduction, Immunology

储存和运输: Store at -20°C. Avoid repeated freezing and thawing



Immunohistochemistry analysis of paraffin-embedded Human liver cancer tissue using 218790(PLGLB2 Antibody) at a dilution of 1/65(Secreted).



Immunohistochemistry analysis of paraffin-embedded Human thyroid cancer tissue using 218790(Anti-PLGLB2 Antibody) at a dilution of 1/65.