

PLEKHF2 RABBIT PAB

货号: S219286

产品全名: PLEKHF2 兔多抗

基因符号: EAPF; PHAFIN2; ZFYVE18

UNIPROT ID: Q9H8W4 (Gene Accession - BC011806)

背景: May play a role in early endosome fusion upstream of RAB5, hence regulating receptor trafficking and fluid-phase transport. Enhances cellular sensitivity to TNF-induced apoptosis (PubMed:18288467).

抗原: Fusion protein of human PLEKHF2

经过测试的应用: ELISA, WB, IHC

推荐稀释比: IHC: 100-300;WB: 1000-5000;ELISA: 5000-10000

种属反应性: Rabbit

克隆性: Rabbit Polyclonal

亚型: Immunogen-specific rabbit IgG

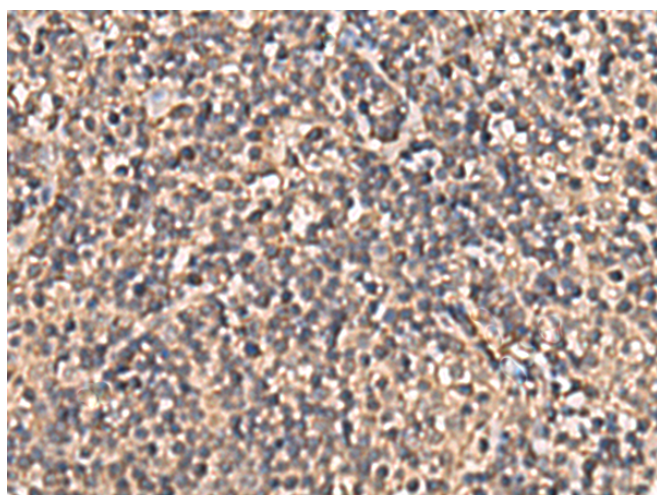
纯化: Antigen affinity purification

种属反应性: Human, Mouse

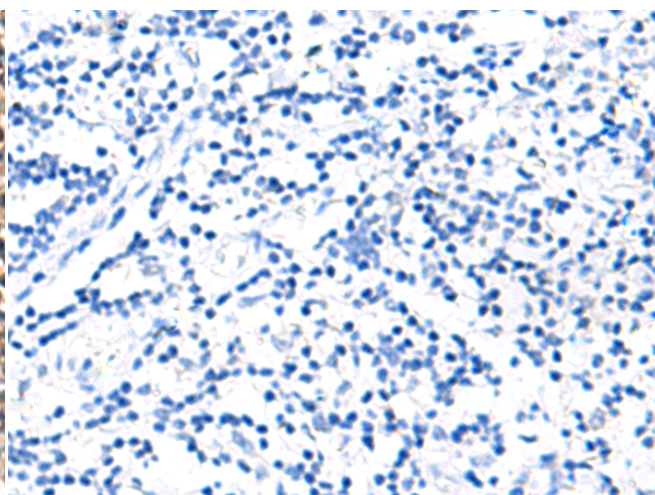
成分: PBS (without Mg²⁺ and Ca²⁺), pH 7.4, 150 mM NaCl, 0.05% Sodium Azide and 40% glycerol

研究领域: Cell Biology

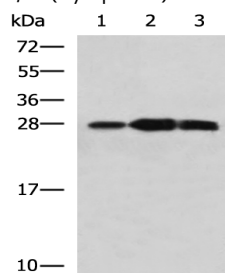
储存和运输: Store at -20°C. Avoid repeated freezing and thawing



Immunohistochemistry analysis of paraffin embedded Human tonsil tissue using 219286 (PLEKHF2 Antibody) at a dilution of 1/90 (Cytoplasm).



In comparison with the IHC on the left, the same paraffin-embedded Human tonsil tissue is first treated with the fusion protein and then with 219286 (Anti-PLEKHF2 Antibody) at dilution 1/90.



Gel: 12%SDS-PAGE, Lysate: 40 µg;

Lane 1-3: Mouse kidney tissue, Raji and Jurkat cell lysates;

Primary antibody: 219286 (PLEKHF2 Antibody) at dilution 1/1400;

Secondary antibody: HRP-conjugated Goat anti rabbit IgG at 1/5000 dilution;

Exposure time: 1 minute