

PLD4 RABBIT PAB

货号: N225243

产品全名: PLD4 兔多抗

基因符号 Phospholipase D4 (PLD 4; EC 3.1.4.4; Choline phosphatase 4; Phosphatidylcholine-hydrolyzing phospholipase D4)

UNIPROT ID: Q96BZ4

背景: 5'→3' DNA exonuclease which digests single-stranded DNA (ssDNA).

抗原: Synthesized peptide derived from human PLD4 Polyclonal

经过测试的应用: WB,ELISA

推荐稀释比: WB: 1/500-1/1000 ELISA: 1/10000

种属反应性: Rabbit

克隆性: Rabbit Polyclonal

分子量: Calculated MW: 56 kDa; Observed MW: 56 kDa

亚型: IgG

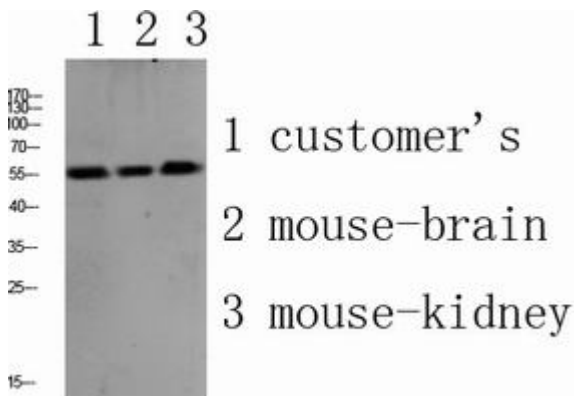
纯化: Affinity Purified

种属反应性: Human, Mouse and Rat

成分: PBS (without Mg²⁺ and Ca²⁺), pH 7.3 containing 50% glycerol, 0.5% BSA and 0.02% sodium azide

研究领域: Cardiovascular

储存和运输: Store at -20°C. Avoid repeated freezing and thawing



Western blot analysis of PLD4 in various lysates using PLD4 antibody.