

PLCZ1 RABBIT PAB

货号: S217698

产品全名: PLCZ1 兔多抗

基因符号: PLCzeta; NYD-SP27; PLC-zeta-1

UNIPROT ID: Q86YW0 (Gene Accession - BC125067)

背景: The protein encoded by this gene is a member of the phosphoinositide-specific phospholipase C family. Members in this family, classified into six isotypes that are tissue- and organ-specific, hydrolyze phosphatidylinositol 4,5-bisphosphate just before the phosphate group to yield diacylglycerol and inositol 1,4,5-trisphosphate. This protein localizes to the acrosome in spermatozoa and elicits Ca²⁺ oscillations and egg activation during fertilization that leads to early embryonic development. Alternative splicing results in multiple transcript variants.

抗原: Fusion protein of human PLCZ1

经过测试的应用: ELISA, IHC

推荐稀释比: IHC: 25-100; ELISA: 1000-2000

种属反应性: Rabbit

克隆性: Rabbit Polyclonal

亚型: Immunogen-specific rabbit IgG

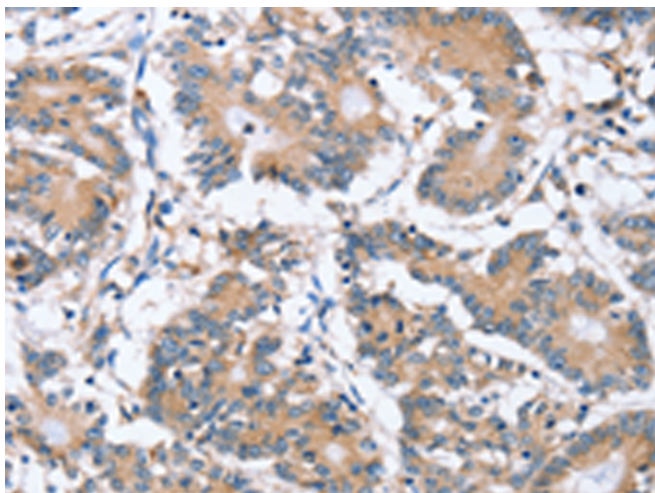
纯化: Antigen affinity purification

种属反应性: Human

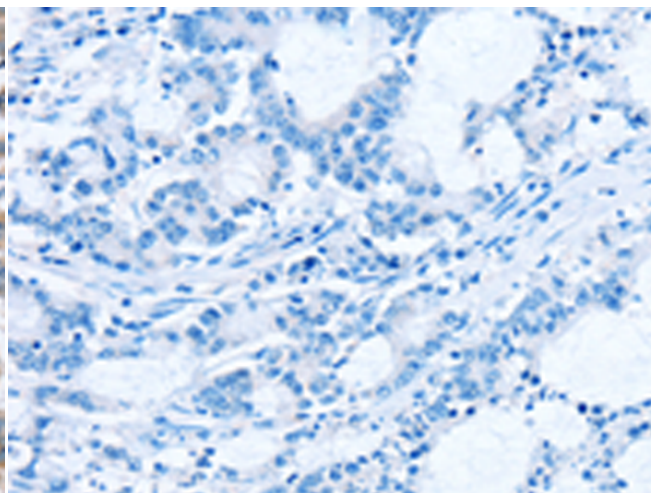
成分: PBS (without Mg²⁺ and Ca²⁺), pH 7.4, 150 mM NaCl, 0.05% Sodium Azide and 40% glycerol

研究领域: Cancer, Metabolism

储存和运输: Store at -20°C. Avoid repeated freezing and thawing



Immunohistochemistry analysis of paraffin embedded Human colon cancer tissue using 217698(PLCZ1 Antibody) at a dilution of 1/20(Cytoplasm).



In comparison with the IHC on the left, the same paraffin-embedded Human colon cancer tissue is first treated with the fusion protein and then with 217698(Anti-PLCZ1 Antibody) at dilution 1/20.