

## PLCL1 RABBIT PAB

货号: S220814

产品全名: PLCL1 兔多抗

基因符号: PLCE; PLCL; PRIP; PLDL1; PPP1R127

**UNIPROT ID:** Q15111 (Gene Accession - NP\_006217)

**背景:** PLC-L (for PLC-deleted in lung carcinoma) is a PLC family member, the expression of which is decreased in small cell lung carcinomas. PLC-L is normally expressed in a variety of fetal and adult organs including the lung. PLC-L is thought to be involved in inositol phospholipid-based intracellular signaling cascade and aberrant expression of PLC-L may contribute to the genesis or progression of human lung carcinoma.

**抗原:** Synthetic peptide of human PLCL1

**经过测试的应用:** ELISA, IHC

**推荐稀释比:** IHC: 25-100; ELISA: 1000-2000

**种属反应性:** Rabbit

**克隆性:** Rabbit Polyclonal

**亚型:** Immunogen-specific rabbit IgG

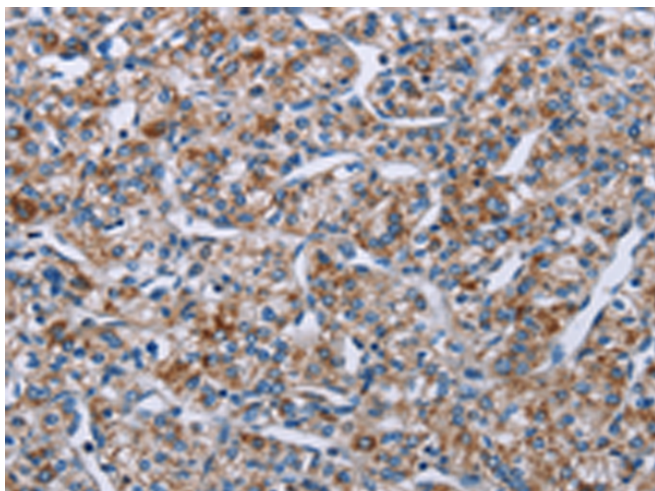
**纯化:** Antigen affinity purification

**种属反应性:** Human

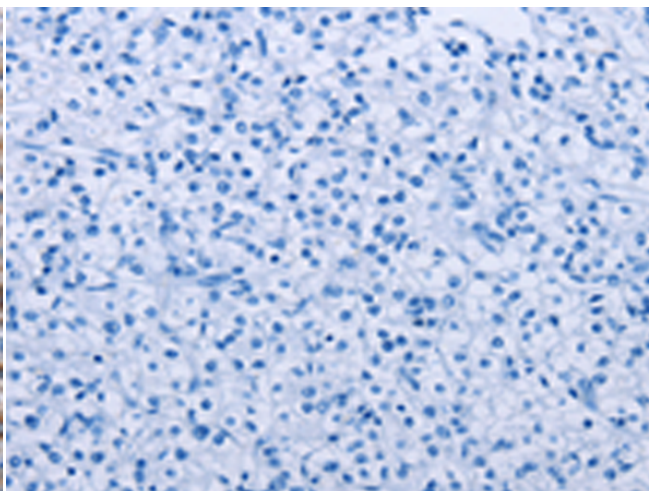
**成分:** PBS (without Mg<sup>2+</sup> and Ca<sup>2+</sup>), pH 7.4, 150 mM NaCl, 0.05% Sodium Azide and 40% glycerol

**研究领域:** Signal Transduction

**储存和运输:** Store at -20°C. Avoid repeated freezing and thawing



Immunohistochemistry analysis of paraffin embedded Human prostate cancer tissue using 220814(PLCL1 Antibody) at a dilution of 1/40(Cytoplasm).



In comparison with the IHC on the left, the same paraffin-embedded Human prostate cancer tissue is first treated with the synthetic peptide and then with 220814(Anti-PLCL1 Antibody) at dilution 1/40.