

PLCB2 RABBIT PAB

货号: S219249

产品全名: PLCB2 兔多抗

基因符号: PLC-beta-2

UNIPROT ID: Q00722 (Gene Accession - BC000939)

背景: The protein encoded by this gene is a phosphodiesterase that catalyzes the hydrolysis of phosphatidylinositol 4,5-bisphosphate to the second messengers inositol 1,4,5-trisphosphate (IP3) and diacylglycerol. The encoded protein is activated by G proteins and has been shown to be involved in the type 2 taste receptor signal transduction pathway. In addition, nuclear factor kappa B can regulate the transcription of this gene, whose protein product is also an important regulator of platelet responses.

抗原: Fusion protein of human PLCB2

经过测试的应用: ELISA, IHC

推荐稀释比: IHC: 50-200; ELISA: 5000-10000

种属反应性: Rabbit

克隆性: Rabbit Polyclonal

亚型: Immunogen-specific rabbit IgG

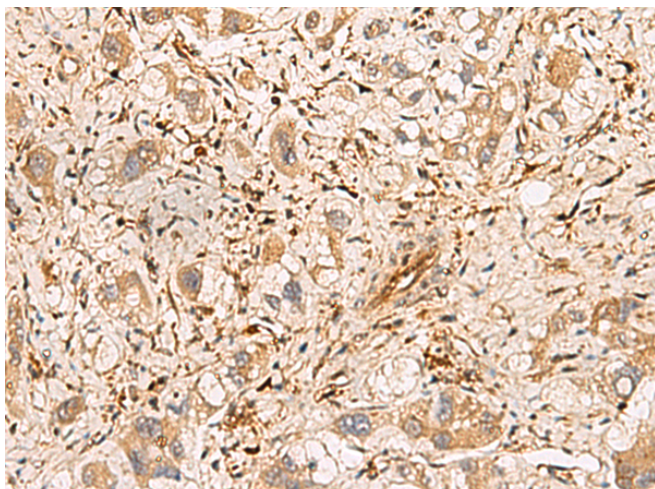
纯化: Antigen affinity purification

种属反应性: Human, Mouse, Rat

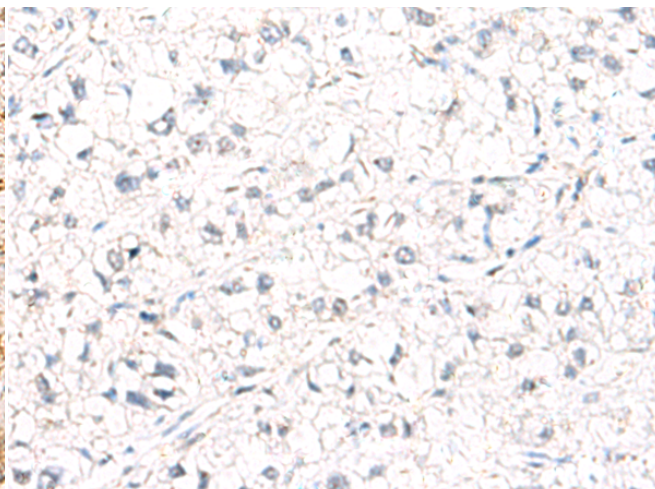
成分: PBS (without Mg²⁺ and Ca²⁺), pH 7.4, 150 mM NaCl, 0.05% Sodium Azide and 40% glycerol

研究领域: Metabolism, Signal Transduction

储存和运输: Store at -20°C. Avoid repeated freezing and thawing



Immunohistochemistry analysis of paraffin embedded Human liver cancer tissue using 219249(PLCB2 Antibody) at a dilution of 1/60(Cytoplasm).



In comparison with the IHC on the left, the same paraffin-embedded Human liver cancer tissue is first treated with the fusion protein and then with 219249(Anti-PLCB2 Antibody) at dilution 1/60.