

## PLACENTAL ALKALINE PHOSPHATASE RABBIT PAB

货号: N225883

产品全名: Placental Alkaline Phosphatase 兔多抗

基因符号 ALPP; PLAP; Alkaline phosphatase; placental type; Alkaline phosphatase Regan isozyme; Placental alkaline phosphatase 1; PLAP-1

**UNIPROT ID:** P05187

背景: PLAP may assist in guiding migratory cells and transporting specific molecules, such as fatty acids and immunoglobulins, across the plasma membrane. The three tissue-specific APs identified in human, PLAP, germ cell AP (GCAP) and intestinal AP, are 90-98% homologous and their genes are clustered on chromosome 2q.

抗原: A synthesized peptide derived from human Placental alkaline phosphatase (PLAP)

经过测试的应用: WB,IHC-P,ICC/IF

推荐稀释比: WB: 1/500-1/1000 IHC: 1/50-1/100 IF: 1/50-1/200

种属反应性: Rabbit

克隆性: Rabbit Polyclonal

分子量: Calculated MW: 58 kDa; Observed MW: 70 kDa

亚型: IgG

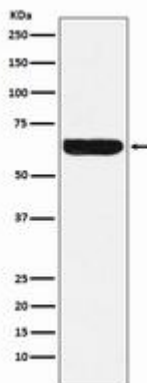
纯化: Affinity Chromatography

种属反应性: Human

成分: PBS (without Mg<sup>2+</sup> and Ca<sup>2+</sup>), pH 7.3 containing 50% glycerol, 0.5% BSA and 0.02% sodium azide

研究领域: Tags & Cell Markers

储存和运输: Store at -20°C. Avoid repeated freezing and thawing



Western blot analysis of Placental alkaline phosphatase (PLAP) in HeLa lysates using Placental Alkaline Phosphatase antibody.



# Product Description

Pioneering GTPase and Oncogene Product Development since 2010

---