

PLAAT2 RABBIT PAB

货号: S220606

产品全名: PLAAT2 兔多抗

基因符号: HRASLS2; PLAAT-2; PLA1/2-2

UNIPROT ID: Q9NWW9 (Gene Accession - NP_060348)

背景: The protein encoded by this gene has both phospholipase and acyltransferase activities and acts as a tumor suppressor. The encoded protein can hydrolyze dipalmitoylated phosphatidylcholine (PC) to palmitic acid and lyso-PC. In addition, this protein can catalyze the N-acylation of phosphatidylethanolamine and can catalyze the O-acylation of lyso-PC to form PC. [provided by RefSeq, Jul 2016]

抗原: Synthetic peptide of human PLAAT2

经过测试的应用: ELISA, WB, IHC

推荐稀释比: IHC: 100-300;WB: 200-1000;ELISA: 2000-10000

种属反应性: Rabbit

克隆性: Rabbit Polyclonal

亚型: Immunogen-specific rabbit IgG

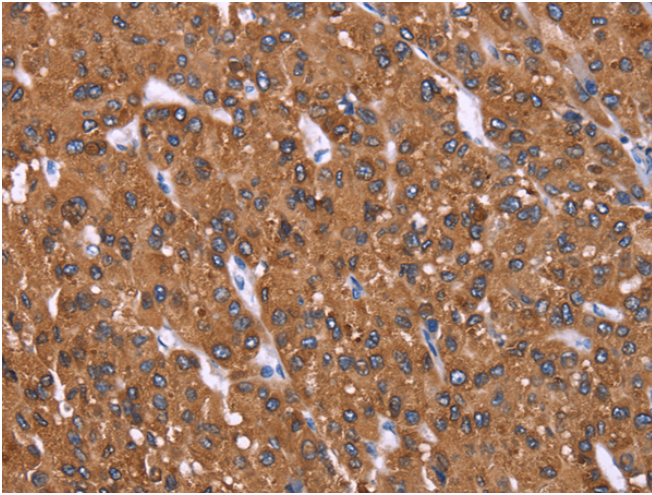
纯化: Antigen affinity purification

种属反应性: Human

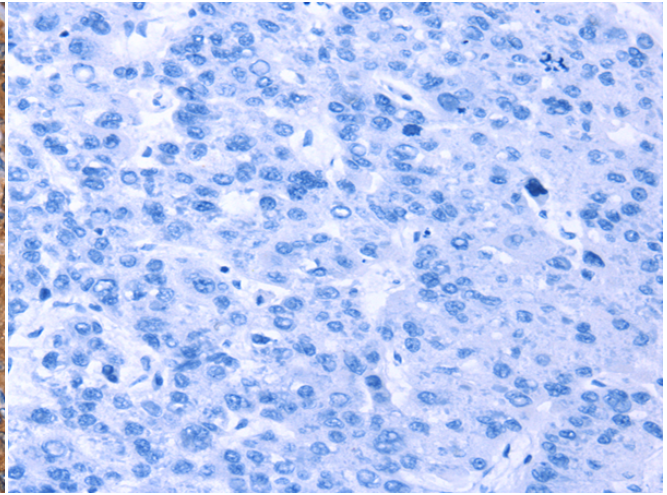
成分: PBS (without Mg²⁺ and Ca²⁺), pH 7.4, 150 mM NaCl, 0.05% Sodium Azide and 40% glycerol

研究领域: Cancer

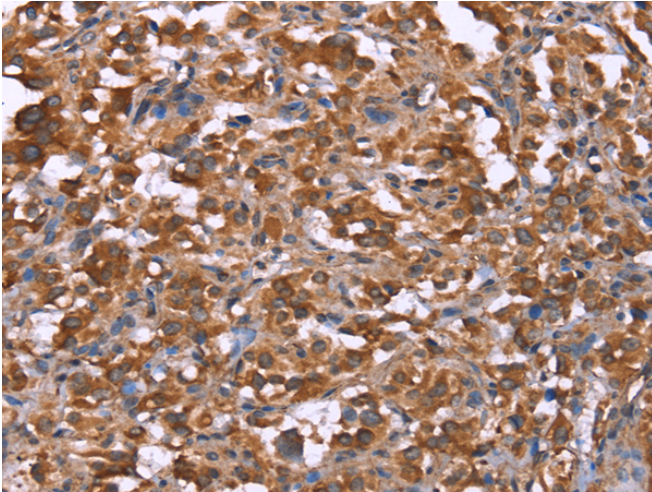
储存和运输: Store at -20°C. Avoid repeated freezing and thawing



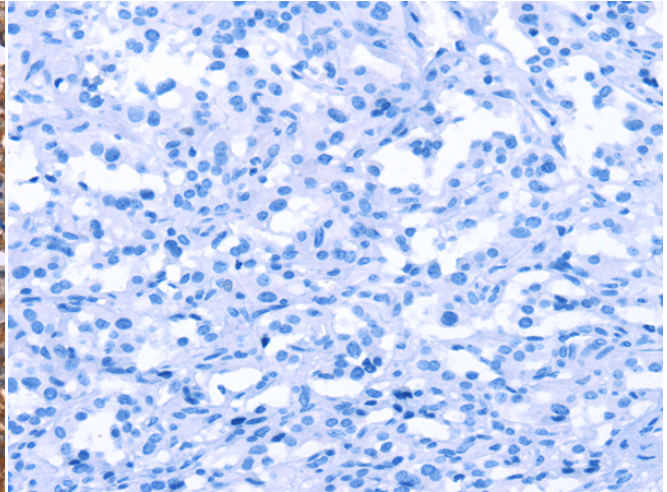
Immunohistochemistry analysis of paraffin embedded Human liver cancer tissue using 220606(PLAAT2 Antibody) at a dilution of 1/40(Cytoplasm).



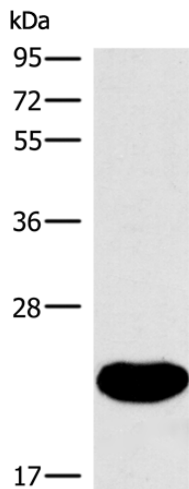
In comparison with the IHC on the left, the same paraffin-embedded Human liver cancer tissue is first treated with the synthetic peptide and then with 220606(Anti-PLAAT2 Antibody) at dilution 1/40.



The image on the left is immunohistochemistry of paraffin-embedded Human thyroid cancer tissue using 220606(Anti-PLAAT2 Antibody) at a dilution of 1/40.



In comparison with the IHC on the left, the same paraffin-embedded Human thyroid cancer tissue is first treated with synthetic peptide and then with D261756(Anti-PLAAT2 Antibody) at dilution 1/40.



Gel: 10%SDS-PAGE, Lysate: 40 µg;
Lane: Human fetal liver tissue;
Primary antibody: 220606(PLAAT2 Antibody) at dilution 1/362.5;
Secondary antibody: Goat anti rabbit IgG at 1/8000 dilution;
Exposure time: 40 seconds



Product Description

Pioneering GTPase and Oncogene Product Development since 2010
