

PKM2 (1F2) MOUSE MAB

货号: N261065

产品全名: PKM2 (1F2) 小鼠单抗

基因符号 PKM; OIP3; PK2; PK3; PKM2; Pyruvate kinase isozymes M1/M2; Cytosolic thyroid hormone-binding protein; CTHBP; Opa-interacting protein 3; OIP-3; Pyruvate kinase 2/3; Pyruvate kinase muscle isozyme; Thyroid hormone-binding protein 1; THBP1; Tu

UNIPROT ID: P14618

背景: Pyruvate kinase is a glycolytic enzyme that catalyses the conversion of phosphoenolpyruvate to pyruvate. PKM2 is shown to be essential for aerobic glycolysis in tumors, known as the Warburg effect.

抗原: Purified recombinant human PKM2 protein fragments expressed in E.coli.

经过测试的应用: WB, ICC/IF, IP

推荐稀释比: WB: 1/500-1/1000 IF: 1/50-1/200 IP: 1/20

种属反应性: Mouse

克隆性: Mouse Monoclonal

克隆编号: 1F2-F4-H11

分子量: Calculated MW: 58 kDa; Observed MW: 58 kDa

亚型: IgG2b

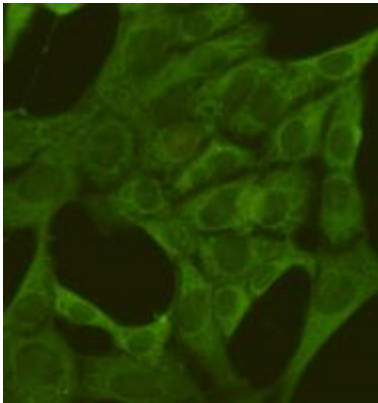
纯化: Affinity Purified

种属反应性: Human, Mouse, Monkey

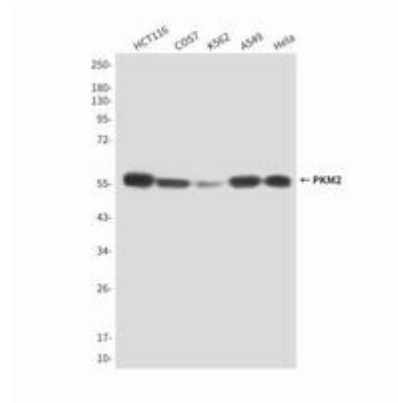
成分: PBS (without Mg²⁺ and Ca²⁺), pH 7.3 containing 50% glycerol, 0.5% BSA and 0.02% sodium azide

研究领域: Signal Transduction

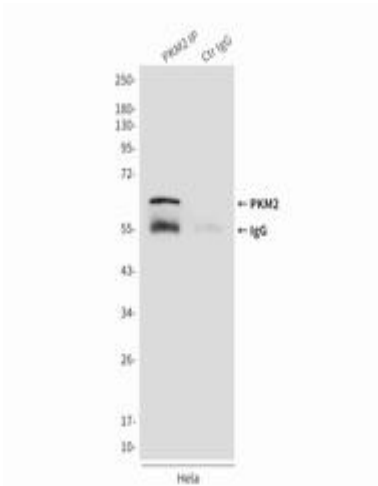
储存和运输: Store at -20°C. Avoid repeated freezing and thawing



Immunofluorescence analysis of PKM2 (IF2) in 3T3 using PKM2 antibody.



Western blot analysis of PKM2 in HCT116, COS7, K562, A549 and Hela lysates using PKM2 antibody.



Immunoprecipitation analysis of PKM2 (IF2) in Hela lysates using PKM2 antibody.