

PKC ZETA RABBIT PAB

货号: N225393

产品全名: PKC zeta 兔多抗

基因符号 PRKCZ; PKC2; Protein kinase C zeta type; nPKC-zeta

UNIPROT ID: Q05513

背景: PKC is one of the earliest events in a cascade that controls a variety of cellular responses, including secretion, gene expression, proliferation, and muscle contraction. PKC is activated by diacylglycerol which in turn phosphorylates a range of cellular proteins. PKC also serves as the receptor for phorbol esters, a class of tumor promoters. Subunit of a quaternary complex that plays a central role in epithelial cell polarization.

抗原: The antiserum was produced against synthesized peptide derived from human PKC zeta. AA range:526-575

经过测试的应用: WB,IHC-F,IHC-P,ICC/IF,ELISA

推荐稀释比: WB: 1/500-1/1000 IHC: 1/50-1/100 IF: 1/50-1/200 ELISA: 1/10000

种属反应性: Rabbit

克隆性: Rabbit Polyclonal

分子量: Calculated MW: 68 kDa; Observed MW: 80 kDa

亚型: IgG

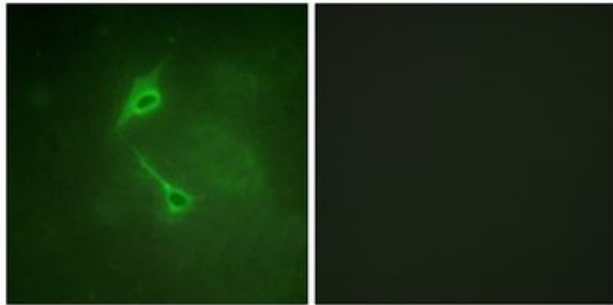
纯化: Affinity Chromatography

种属反应性: Human, Mouse and Rat,Monkey

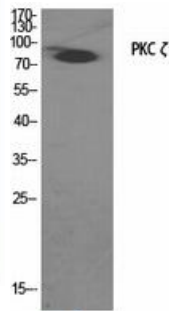
成分: PBS (without Mg²⁺ and Ca²⁺), pH 7.3 containing 50% glycerol, 0.5% BSA and 0.02% sodium azide

研究领域: Signal Transduction

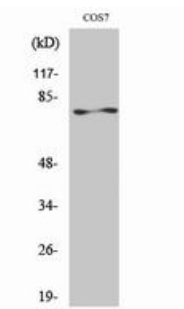
储存和运输: Store at -20°C. Avoid repeated freezing and thawing



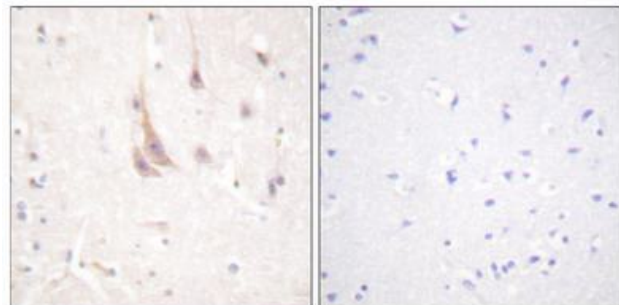
Immunofluorescence analysis of PKC zeta in NIH/3T3 cells, using PKC zeta antibody. The picture on the right is blocked with the synthesized peptide.



Western blot analysis of PKC zeta in various lysates using PKC zeta antibody.



Western blot analysis of PKC zeta in COS7 lysates using PKC zeta antibody.



Immunohistochemistry analysis of paraffin-embedded Human brain tissue using PKC zeta antibody. High-pressure and temperature Sodium Citrate pH 6.0 was used for antigen retrieval. Sample with blocking peptide on the right.