

PKC GAMMA RABBIT MAB

货号: N262730

产品全名: PKC gamma 兔单克隆抗体

基因符号 PRKCG; PKCG; Protein kinase C gamma type; PKC-gamma

UNIPROT ID: P05129

背景: This is a calcium-activated, phospholipid-dependent, serine- and threonine-specific enzyme.

抗原: Recombinant protein of human PKC

经过测试的应用: WB,IP

推荐稀释比: WB: 1/500-1/1000 IP: 1/20

种属反应性: Rabbit

克隆性: Rabbit Monoclonal

克隆编号: R06-8C6

分子量: Calculated MW: 78 kDa; Observed MW: 78 kDa

亚型: IgG

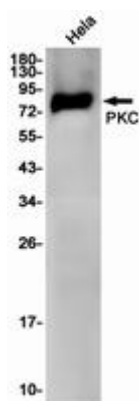
纯化: Affinity Purified

种属反应性: Human,Rat

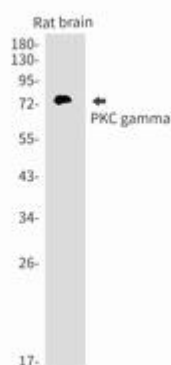
成分: PBS (without Mg²⁺ and Ca²⁺), pH 7.3 containing 50% glycerol, 0.5% BSA and 0.02% sodium azide

研究领域: Signal Transduction

储存和运输: Store at -20°C. Avoid repeated freezing and thawing



Western blot analysis of PKC in HeLa lysates using PKC antibody.



Western blot analysis of PKC gamma in rat brain lysates using PKC gamma antibody.



Product Description

Pioneering GTPase and Oncogene Product Development since 2010
