

## PKC DELTA RABBIT PAB

货号: N225760

产品全名: PKC delta 兔多抗

基因符号 Protein kinase C delta type; Tyrosine-protein kinase PRKCD; nPKC-delta

**UNIPROT ID:** Q05655

**背景:** Protein kinase C (PKC) is a family of serine- and threonine-specific protein kinases that can be activated by calcium and the second messenger diacylglycerol. PKC family members phosphorylate a wide variety of protein targets and are known to be involved in diverse cellular signaling pathways.

**抗原:** A synthesized peptide derived from human PKC delta

**经过测试的应用:** WB,IHC-P,ICC/IF

**推荐稀释比:** WB: 1/500-1/1000 IHC: 1/50-1/100 IF: 1/50-1/200

**种属反应性:** Rabbit

**克隆性:** Rabbit Polyclonal

**分子量:** Calculated MW: 78 kDa; Observed MW: 78 kDa

**亚型:** IgG

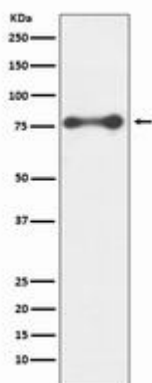
**纯化:** Affinity Chromatography

**种属反应性:** Human, Mouse and Rat

**成分:** PBS (without Mg<sup>2+</sup> and Ca<sup>2+</sup>), pH 7.3 containing 50% glycerol, 0.5% BSA and 0.02% sodium azide

**研究领域:** Signal Transduction

**储存和运输:** Store at -20°C. Avoid repeated freezing and thawing



Western blot analysis of PKC delta in HeLa lysates using PKC delta antibody.



# Product Description

Pioneering GTPase and Oncogene Product Development since 2010

---