

PKC ALPHA RABBIT MAB

货号: N262724

产品全名: PKC alpha 兔单克隆抗体

基因符号 PRKCA; PKCA; PRKACA; Protein kinase C alpha type; PKC-A;
PKC-alpha

UNIPROT ID: P17252

背景: PKC alpha is an AGC kinase of the PKC family. A classical PKC downstream of many mitogenic and receptors. Classical PKCs are calcium-dependent enzymes that are activated by phosphatidylserine, diacylglycerol and phorbol esters.

抗原: A synthetic peptide of human PKC alpha

经过测试的应用: WB,IHC-P,IP

推荐稀释比: WB: 1/500-1/1000 IHC: 1/50-1/100 IP: 1/20

种属反应性: Rabbit

克隆性: Rabbit Monoclonal

克隆编号: R05-4E5

分子量: Calculated MW: 77 kDa; Observed MW: 80 kDa

亚型: IgG

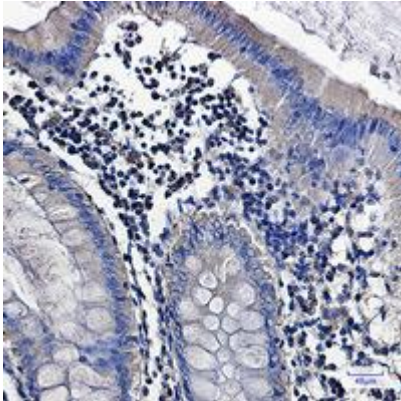
纯化: Affinity Purified

种属反应性: Human, Mouse and Rat

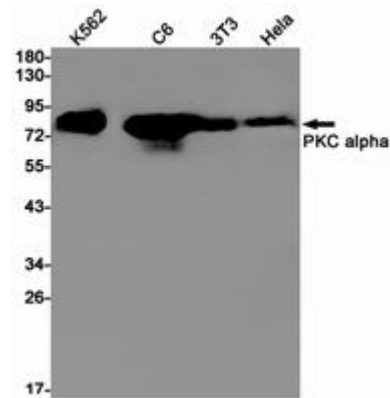
成分: PBS (without Mg²⁺ and Ca²⁺), pH 7.3 containing 50% glycerol, 0.5% BSA and 0.02% sodium azide

研究领域: Neuroscience&Alzheimer's disease

储存和运输: Store at -20°C. Avoid repeated freezing and thawing



Immunohistochemistry analysis of paraffin-embedded Human colon cancer using PKC alpha antibody. High-pressure and temperature Sodium Citrate pH 6.0 was used for antigen retrieval.



Western blot analysis of PKC alpha in K562, C6, 3T3, HeLa lysates using PKC alpha antibody.