

## PKA RII BETA RABBIT PAB

货号: N225813

产品全名: PKA RII beta 兔多抗

基因符号 AI451071; cAMP dependent protein kinase type II beta regulatory chain; Pkarb2; PRKAR2B; Protein kinase cAMP dependent regulatory type II beta; RATDNA; RII beta

**UNIPROT ID:** P31323

背景: Regulatory subunit of the cAMP-dependent protein kinases involved in cAMP signaling in cells. Type II regulatory chains mediate membrane association by binding to anchoring proteins, including the MAP2 kinase.

抗原: A synthesized peptide derived from human PKA 2 beta

经过测试的应用: WB,IHC-P,ICC/IF,IP,FC

推荐稀释比: WB: 1/500-1/1000 IHC: 1/50-1/100 IF: 1/50-1/200 IP: 1/20 FC: 1/50-1/100

种属反应性: Rabbit

克隆性: Rabbit Polyclonal

分子量: Calculated MW: 46 kDa; Observed MW: 46 kDa

亚型: IgG

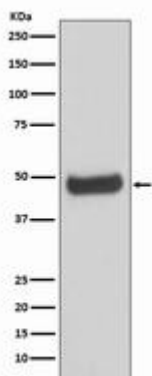
纯化: Affinity Chromatography

种属反应性: Human, Mouse and Rat

成分: PBS (without Mg<sup>2+</sup> and Ca<sup>2+</sup>), pH 7.3 containing 50% glycerol, 0.5% BSA and 0.02% sodium azide

研究领域: Signal Transduction

储存和运输: Store at -20°C. Avoid repeated freezing and thawing



Western blot analysis of PKA 2 beta in Human fetal brain lysates using PKA RII beta antibody.



# Product Description

Pioneering GTPase and Oncogene Product Development since 2010

---