

PIWIL3 RABBIT PAB

货号: S214095

产品全名: PIWIL3 兔多抗

基因符号: HIWI3

UNIPROT ID: Q7Z3Z3 (Gene Accession - NP_001008496)

背景: This gene encodes a member of the PIWI subfamily of Argonaute family proteins. This subfamily of proteins contains a PAZ domain, found in proteins involved in RNA-mediated gene silencing, and a C-terminal Piwi domain. The encoded protein is thought to function in maintenance of germline cells. Multiple transcript variants encoding different isoforms have been found for this gene.

抗原: Synthetic peptide of human PIWIL3

经过测试的应用: ELISA, IHC

推荐稀释比: IHC: 50-100; ELISA: 5000-10000

种属反应性: Rabbit

克隆性: Rabbit Polyclonal

亚型: Immunogen-specific rabbit IgG

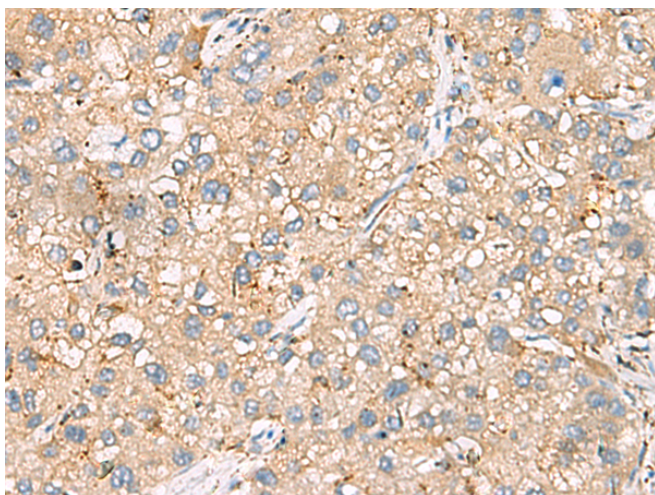
纯化: Antigen affinity purification

种属反应性: Human

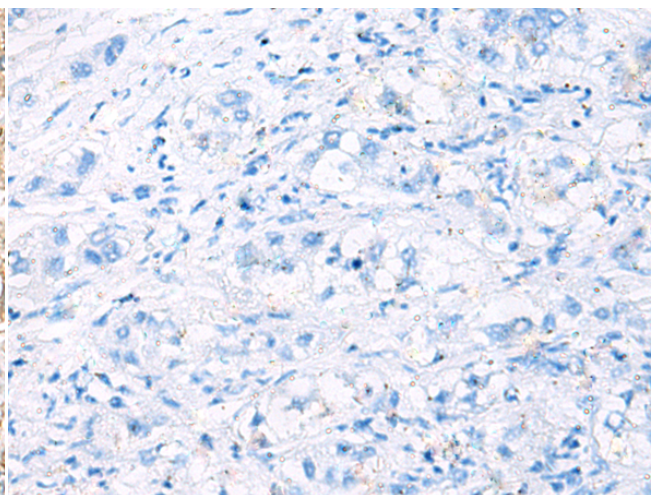
成分: PBS (without Mg²⁺ and Ca²⁺), pH 7.4, 150 mM NaCl, 0.05% Sodium Azide and 40% glycerol

研究领域: Epigenetics and Nuclear Signaling, Stem Cells, Developmental Biology

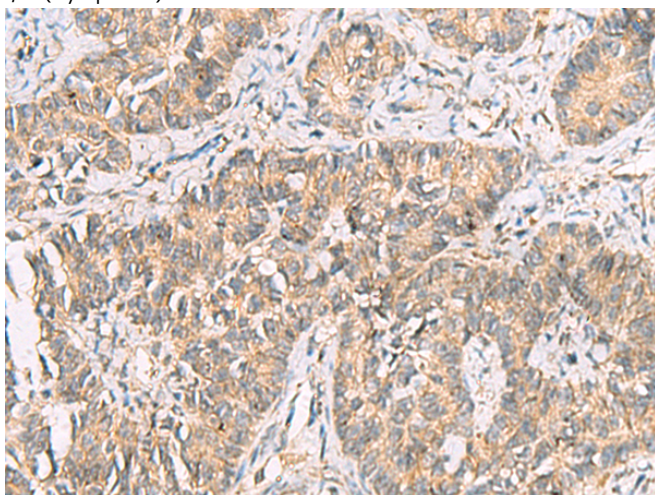
储存和运输: Store at -20°C. Avoid repeated freezing and thawing



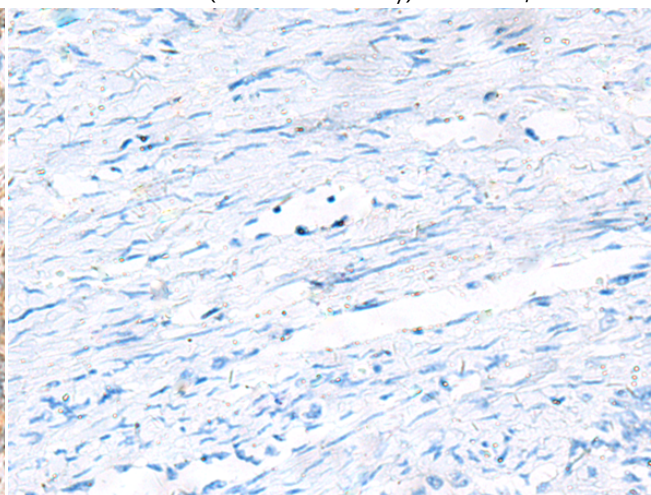
Immunohistochemistry analysis of paraffin embedded Human liver cancer tissue using 214095(PIWIL3 Antibody) at a dilution of 1/30(Cytoplasm).



In comparison with the IHC on the left, the same paraffin-embedded Human liver cancer tissue is first treated with the synthetic peptide and then with 214095(Anti-PIWIL3 Antibody) at dilution 1/30.



The image on the left is immunohistochemistry of paraffin-embedded Human ovarian cancer tissue using 214095(Anti-PIWIL3 Antibody) at a dilution of 1/30.



In comparison with the IHC on the left, the same paraffin-embedded Human ovarian cancer tissue is first treated with synthetic peptide and then with D161332(Anti-PIWIL3 Antibody) at dilution 1/30.



Product Description

Pioneering GTPase and Oncogene Product Development since 2010
