

PIWIL2 RABBIT PAB

货号: S213716

产品全名: PIWIL2 兔多抗

基因符号: CT80; HIL1; mili; PIWIL1

UNIPROT ID: Q8TC59 (Gene Accession - NP_060538)

背景: PIWIL2 belongs to the Argonaute family of proteins, which function in development and maintenance of germline stem cells (Sasaki et al., 2003 [PubMed 12906857]).

抗原: Synthetic peptide of human PIWIL2

经过测试的应用: ELISA, IHC

推荐稀释比: IHC: 25-100; ELISA: 2000-5000

种属反应性: Rabbit

克隆性: Rabbit Polyclonal

亚型: Immunogen-specific rabbit IgG

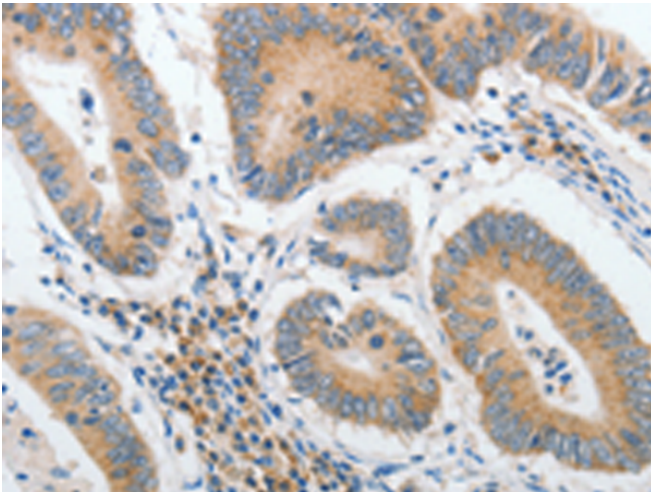
纯化: Antigen affinity purification

种属反应性: Human

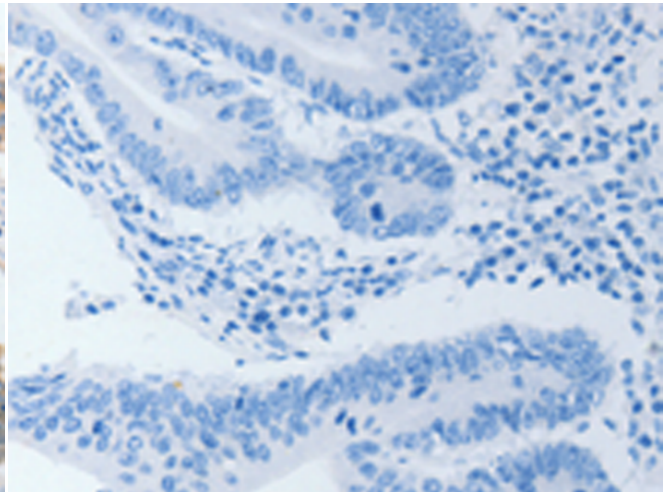
成分: PBS (without Mg²⁺ and Ca²⁺), pH 7.4, 150 mM NaCl, 0.05% Sodium Azide and 40% glycerol

研究领域: Epigenetics and Nuclear Signaling, Stem Cells

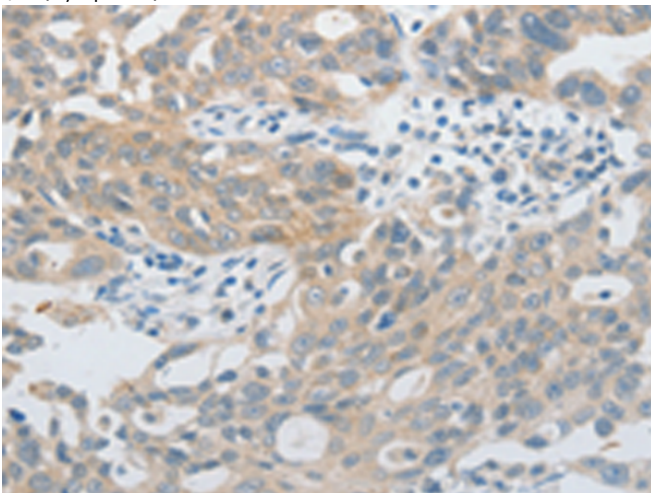
储存和运输: Store at -20°C. Avoid repeated freezing and thawing



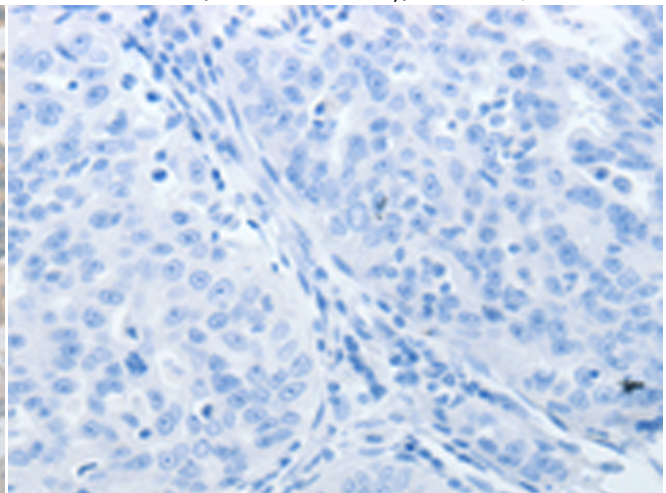
Immunohistochemistry analysis of paraffin embedded Human colon cancer tissue using 213716(PIWIL2 Antibody) at a dilution of 1/40(Cytoplasm).



In comparison with the IHC on the left, the same paraffin-embedded Human colon cancer tissue is first treated with the synthetic peptide and then with 213716(Anti-PIWIL2 Antibody) at dilution 1/40.



The image on the left is immunohistochemistry of paraffin-embedded Human ovarian cancer tissue using 213716(Anti-PIWIL2 Antibody) at a dilution of 1/40.



In comparison with the IHC on the left, the same paraffin-embedded Human ovarian cancer tissue is first treated with synthetic peptide and then with D160710(Anti-PIWIL2 Antibody) at dilution 1/40.



Product Description

Pioneering GTPase and Oncogene Product Development since 2010
