

PIP RABBIT PAB

货号: S217470

产品全名: PIP 兔多抗

基因符号: GPIP4; GCDFP15; GCDFP-15

UNIPROT ID: P12273 (Gene Accession - BC010950)

背景: The hormonally responsive prolactin-inducible protein (PIP) gene is expressed in benign and malignant breast tumor tissues and in some normal exocrine organs such as sweat, salivary, and lacrimal glands.

抗原: Fusion protein of human PIP

经过测试的应用: ELISA, IHC

推荐稀释比: IHC: 50-100; ELISA: 2000-10000

种属反应性: Rabbit

克隆性: Rabbit Polyclonal

亚型: Immunogen-specific rabbit IgG

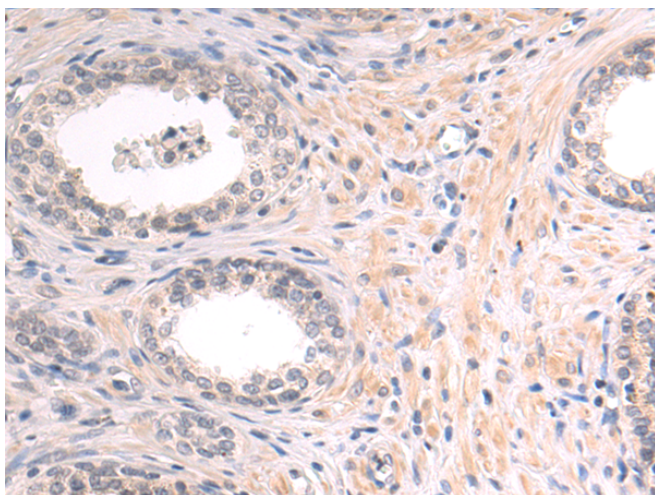
纯化: Antigen affinity purification

种属反应性: Human

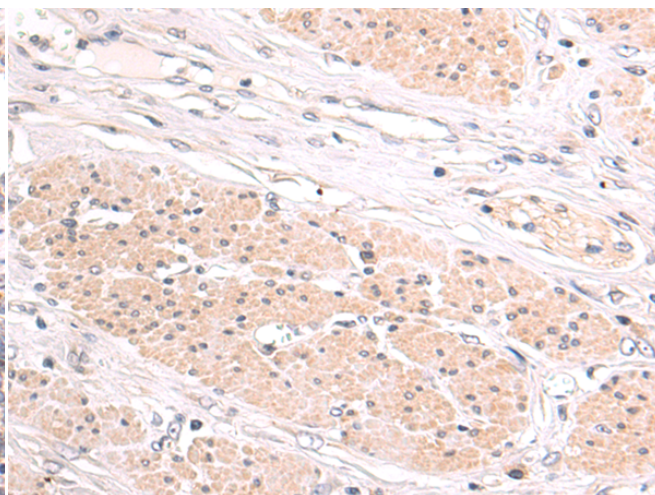
成分: PBS (without Mg²⁺ and Ca²⁺), pH 7.4, 150 mM NaCl, 0.05% Sodium Azide and 40% glycerol

研究领域: Signal Transduction

储存和运输: Store at -20°C. Avoid repeated freezing and thawing



Immunohistochemistry analysis of paraffin-embedded Human prostate cancer tissue using 217470(PIP Antibody) at a dilution of 1/50(Secreted).



Immunohistochemistry analysis of paraffin-embedded Human esophagus cancer tissue using 217470(Anti-PIP Antibody) at a dilution of 1/50.