

PIN4 RABBIT MAB

货号: N262720

产品全名: PIN4 兔单克隆抗体

基因符号 EPVH; PARI4; PARI7

UNIPROT ID: Q9Y237

背景: Isoform 1 is involved as a ribosomal RNA processing factor in ribosome biogenesis. Binds to tightly bent AT-rich stretches of double-stranded DNA.

抗原: A synthetic peptide of human PIN4

经过测试的应用: WB,IP

推荐稀释比: WB: 1/500-1/1000 IP: 1/20

种属反应性: Rabbit

克隆性: Rabbit Monoclonal

克隆编号: R06-815

分子量: Calculated MW: 14 kDa; Observed MW: 14 kDa

亚型: IgG

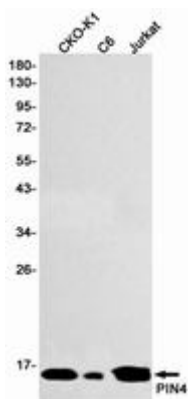
纯化: Affinity Purified

种属反应性: Human,Rat,Hamster

成分: PBS (without Mg²⁺ and Ca²⁺), pH 7.3 containing 50% glycerol, 0.5% BSA and 0.02% sodium azide

研究领域: Epigenetics and Nuclear Signaling

储存和运输: Store at -20°C. Avoid repeated freezing and thawing



Western blot analysis of PIN4 in CHO-K1, C6, Jurkat lysates using PIN4 antibody.