

PIN1 RABBIT MAB

货号: N262719

产品全名: PIN1 兔单克隆抗体

基因符号 DOD; UBL5

UNIPROT ID: Q13526

背景: Peptidyl-prolyl cis/trans isomerases (PPIases) catalyze the cis/trans isomerization of peptidyl-prolyl peptide bonds. This gene encodes one of the PPIases, which specifically binds to phosphorylated ser/thr-pro motifs to catalytically regulate the post-phosphorylation conformation of its substrates. The conformational regulation catalyzed by this PPIase has a profound impact on key proteins involved in the regulation of cell growth, genotoxic and other stress responses, the immune response, induction and maintenance of pluripotency, germ cell development, neuronal differentiation, and survival.

抗原: Recombinant protein of Pin1

经过测试的应用: WB,IHC-F,IHC-P,ICC/IF,IP

推荐稀释比: WB: 1/500-1/1000 IHC: 1/50-1/100 IF: 1/50-1/200 IP: 1/20

种属反应性: Rabbit

克隆性: Rabbit Monoclonal

克隆编号: R01-7G8

分子量: Calculated MW: 18 kDa; Observed MW: 18 kDa

亚型: IgG

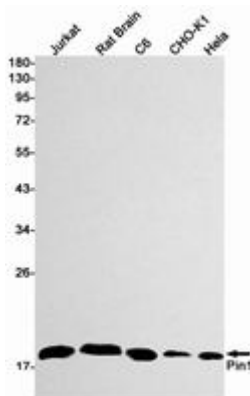
纯化: Affinity Purified

种属反应性: Human, Mouse and Rat,Hamster

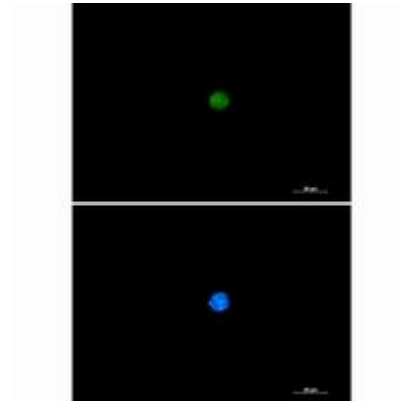
成分: PBS (without Mg²⁺ and Ca²⁺), pH 7.3 containing 50% glycerol, 0.5% BSA and 0.02% sodium azide

研究领域: Neuroscience

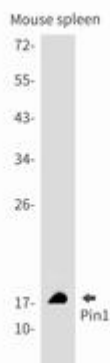
储存和运输: Store at -20°C. Avoid repeated freezing and thawing



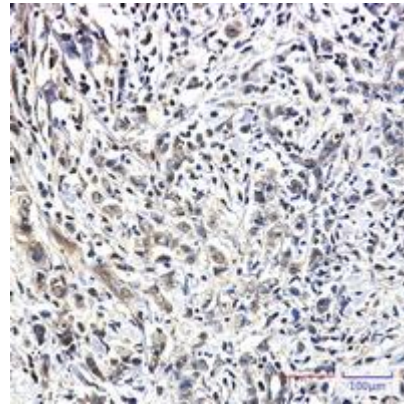
Western blot analysis of Pin1 in Jurkat, rat Brain, C6, CHO-K1, Hela lysates using Pin1 antibody



Immunocytochemistry analysis of PIN1 (green) in 293 using PIN1 antibody, and DAPI (blue).



Western blot analysis of Pin1 in mouse spleen lysates using Pin1 antibody.



Immunohistochemistry analysis of paraffin-embedded Human breast cancer using Pin1 antibody. High-pressure and temperature Sodium Citrate pH 6.0 was used for antigen retrieval.