

## PIK3CD RABBIT PAB

货号: S220808

产品全名: PIK3CD 兔多抗

基因符号: APDS; PI3K; IMD14; p110D; IMD14A; IMD14B; ROCHIS; P110DELTA

**UNIPROT ID:** O00329 (Gene Accession - NP\_005017)

背景: Phosphoinositide 3-kinases (PI3Ks) phosphorylate inositol lipids and are involved in the immune response. The protein encoded by this gene is a class I PI3K found primarily in leukocytes. Like other class I PI3Ks (p110-alpha p110-beta, and p110-gamma), the encoded protein binds p85 adapter proteins and GTP-bound RAS. However, unlike the other class I PI3Ks, this protein phosphorylates itself, not p85 protein.

抗原: Synthetic peptide of human PIK3CD

经过测试的应用: ELISA, WB, IHC

推荐稀释比: IHC: 50-200;WB: 500-2000;ELISA: 5000-10000

种属反应性: Rabbit

克隆性: Rabbit Polyclonal

亚型: Immunogen-specific rabbit IgG

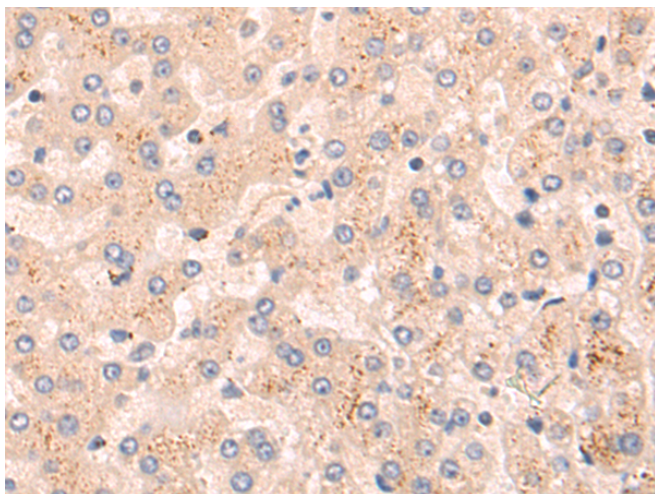
纯化: Antigen affinity purification

种属反应性: Human, Mouse

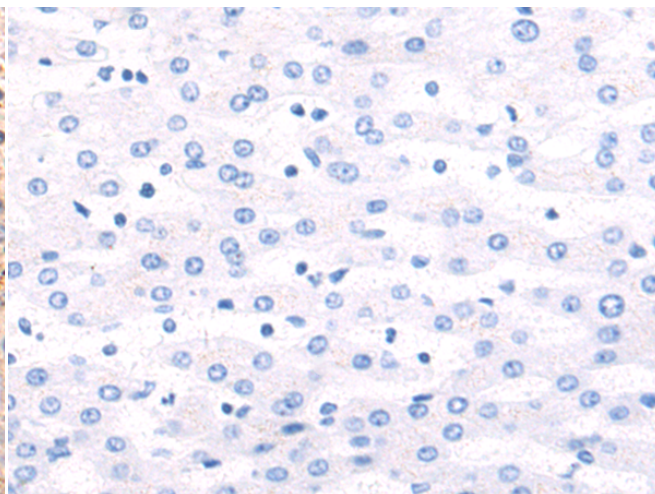
成分: PBS (without Mg<sup>2+</sup> and Ca<sup>2+</sup>), pH 7.4, 150 mM NaCl, 0.05% Sodium Azide and 40% glycerol

研究领域: Signal Transduction, Immunology

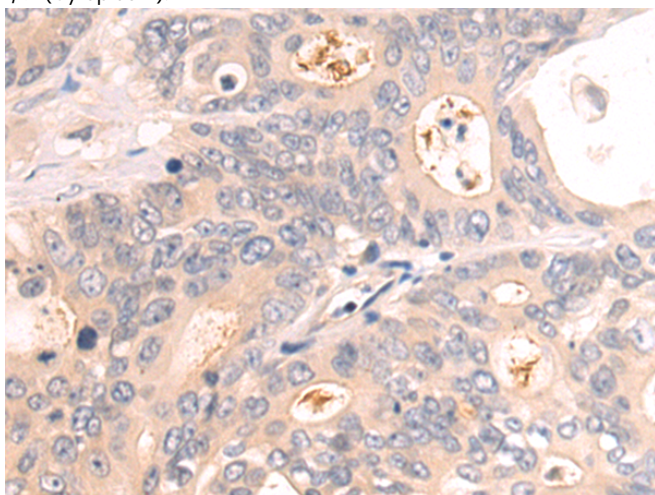
储存和运输: Store at -20°C. Avoid repeated freezing and thawing



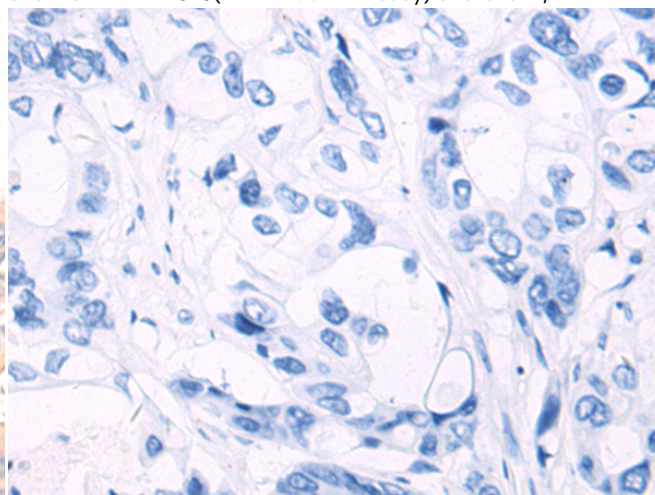
Immunohistochemistry analysis of paraffin embedded Human liver cancer tissue using 220808 (PIK3CD Antibody) at a dilution of 1/50 (Cytoplasm).



In comparison with the IHC on the left, the same paraffin-embedded Human liver cancer tissue is first treated with the synthetic peptide and then with 220808 (Anti-PIK3CD Antibody) at dilution 1/50.

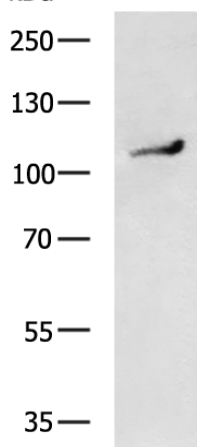


The image on the left is immunohistochemistry of paraffin-embedded Human colorectal cancer tissue using 220808 (Anti-PIK3CD Antibody) at a dilution of 1/50.



In comparison with the IHC on the left, the same paraffin-embedded Human colorectal cancer tissue is first treated with synthetic peptide and then with D262049 (Anti-PIK3CD Antibody) at dilution 1/50.

kDa



Gel: 6% SDS-PAGE, Lysate: 40 µg;  
Lane: 293T cell lysate;  
Primary antibody: 220808 (PIK3CD Antibody) at dilution 1/800;  
Secondary antibody: HRP-conjugated Goat anti rabbit IgG at 1/5000 dilution;  
Exposure time: 2 minutes



# Product Description

Pioneering GTPase and Oncogene Product Development since 2010

---