

## PI3 KINASE C2 GAMMA RABBIT PAB

货号: N225203

产品全名: PI3 Kinase C2 gamma 兔多抗

基因符号 PIK3C2G; Phosphatidylinositol 4-phosphate 3-kinase C2 domain-containing subunit gamma; PI3K-C2-gamma; PtdIns-3-kinase C2 subunit gamma; Phosphoinositide 3-kinase-C2-gamma

**UNIPROT ID:** O75747

背景: Generates phosphatidylinositol 3-phosphate (PtdIns3P) and phosphatidylinositol 3,4-bisphosphate (PtdIns(3,4)P<sub>2</sub>) that act as second messengers (By similarity).

抗原: Synthesized peptide derived from the N-terminal region of human PI 3-Kinase C2 $\gamma$ .

经过测试的应用: WB,ELISA

推荐稀释比: WB: 1/500-1/1000 ELISA: 1/10000

种属反应性: Rabbit

克隆性: Rabbit Polyclonal

分子量: Calculated MW: 166 kDa; Observed MW: 160 kDa

亚型: IgG

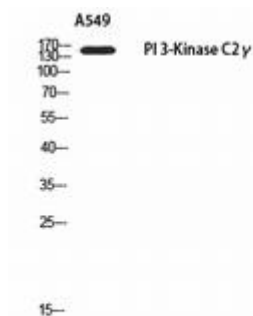
纯化: Affinity Purified

种属反应性: Human

成分: PBS (without Mg<sup>2+</sup> and Ca<sup>2+</sup>), pH 7.3 containing 50% glycerol, 0.5% BSA and 0.02% sodium azide

研究领域: Cell Biology

储存和运输: Store at -20°C. Avoid repeated freezing and thawing



Western blot analysis of PI3 Kinase C2 gamma in A549 lysates using PI3 Kinase C2 gamma antibody.



# Product Description

Pioneering GTPase and Oncogene Product Development since 2010

---