

PHOSPHOLIPASE C GAMMA 1 RABBIT MAB

货号: N263492

产品全名: Phospholipase C gamma 1 兔单克隆抗体

基因符号 PLCG1; PLC1; 1-phosphatidylinositol 4; 5-bisphosphate phosphodiesterase gamma-1; PLC-148; Phosphoinositide phospholipase C-gamma-1; Phospholipase C-II; PLC-II; Phospholipase C-gamma-1; PLC-gamma-1

UNIPROT ID: P19174

背景: The protein encoded by this gene catalyzes the formation of inositol 1,4,5-trisphosphate and diacylglycerol from phosphatidylinositol 4,5-bisphosphate. This reaction uses calcium as a cofactor and plays an important role in the intracellular transduction of receptor-mediated tyrosine kinase activators. For example, when activated by SRC, the encoded protein causes the Ras guanine nucleotide exchange factor RasGRP1 to translocate to the Golgi, where it activates Ras.

抗原: A synthetic peptide of human Phospholipase C gamma 1/PLC-gamma-1

经过测试的应用: WB, ICC/IF, IP

推荐稀释比: WB: 1/500-1/1000 IF: 1/50-1/200 IP: 1/20

种属反应性: Rabbit

克隆性: Rabbit Monoclonal

克隆编号: R01-6B4

分子量: Calculated MW: 149 kDa; Observed MW: 149 kDa

亚型: IgG

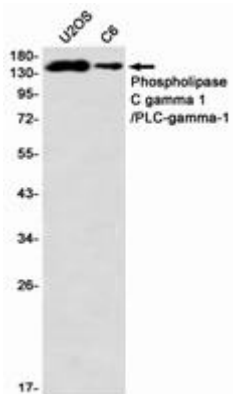
纯化: Affinity Purified

种属反应性: Human, Rat

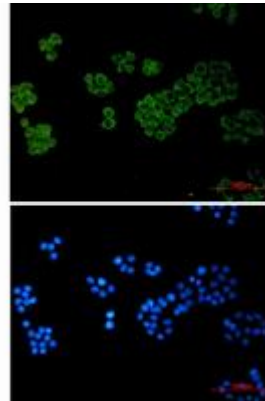
成分: PBS (without Mg²⁺ and Ca²⁺), pH 7.3 containing 50% glycerol, 0.5% BSA and 0.02% sodium azide

研究领域: Cardiovascular

储存和运输: Store at -20°C. Avoid repeated freezing and thawing



Western blot analysis of Phospholipase C gamma 1/PLCgamma1 in U2OS, C6 lysates using Phospholipase C gamma 1/PLCgamma1 antibody.



Immunocytochemistry analysis of Phospholipase C gamma 1 (green) in HeLa using Phospholipase C gamma 1 antibody, and DAPI (blue).