

PHOSPHOLIPASE A2 ACTIVATOR PROTEIN RABBIT MAB

货号: N262713

产品全名: Phospholipase A2 Activator Protein 兔单克隆抗体

基因符号 Glycerophosphatase; PLA2P; Plaa; PLAP

UNIPROT ID: Q9Y263

背景: Involved in the maintenance of ubiquitin levels.

抗原: A synthetic peptide of human Anti-Phospholipase A2 activator protein (PLAP)

经过测试的应用: WB,ICC/IF

推荐稀释比: WB: 1/500-1/1000 IF: 1/50-1/200

种属反应性: Rabbit

克隆性: Rabbit Monoclonal

克隆编号: R06-1D7

分子量: Calculated MW: 87 kDa; Observed MW: 87 kDa

亚型: IgG

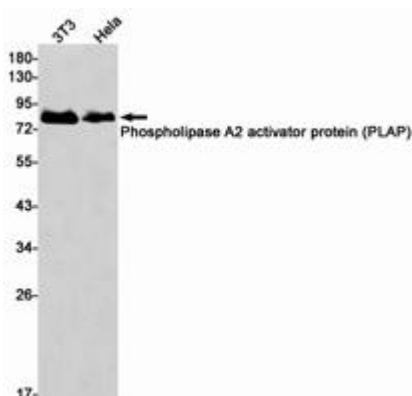
纯化: Affinity Purified

种属反应性: Human,Mouse

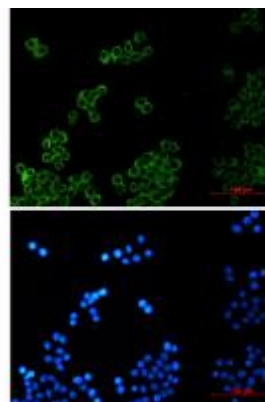
成分: PBS (without Mg²⁺ and Ca²⁺), pH 7.3 containing 50% glycerol, 0.5% BSA and 0.02% sodium azide

研究领域: Immunology

储存和运输: Store at -20°C. Avoid repeated freezing and thawing



Western blot analysis of Phospholipase A2 activator protein (PLAP) in 3T3, HeLa lysates using Phospholipase A2 activator protein (PLAP) antibody.



Immunocytochemistry analysis of Phospholipase A2 Activator Protein (green) in HeLa using Phospholipase A2 Activator Protein antibody, and DAPI (blue).



Product Description

Pioneering GTPase and Oncogene Product Development since 2010
