

## PHOSPHO-VEGF RECEPTOR 2 (TYR1175) RABBIT PAB

货号: N225292

产品全名: Phospho-VEGF Receptor 2 (Tyr1175) 兔多抗

基因符号 KDR; FLK1; VEGFR2; Vascular endothelial growth factor receptor 2; VEGFR-2; Fetal liver kinase 1; FLK-1; Kinase insert domain receptor; KDR; Protein-tyrosine kinase receptor flk-1; CD antigen CD309

**UNIPROT ID:** P35968

背景: VEGFR-2 is a receptor tyrosine kinase of the VEGFR family. High affinity receptor for VEGF and VEGF-C. Ligand binding induces autophosphorylation and activation. Activated receptor recruits proteins including Shc, GRB2, PI3K, Nck, SHP-1 and SHP-2.

抗原: Synthetic peptide of human KDR

经过测试的应用: IHC-P, ICC/IF

推荐稀释比: IHC: 1/50-1/100 ICC: 1/100-1/200

种属反应性: Rabbit

克隆性: Rabbit Polyclonal

分子量: -

亚型: IgG

纯化: Affinity Purified

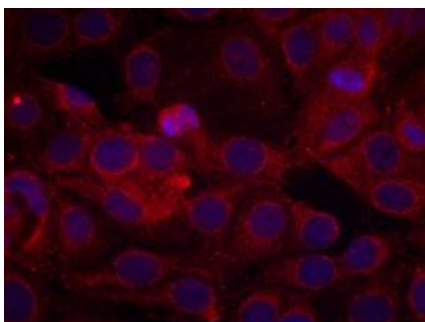
种属反应性: Human, Mouse and Rat

**Modification:** Phosphorylated

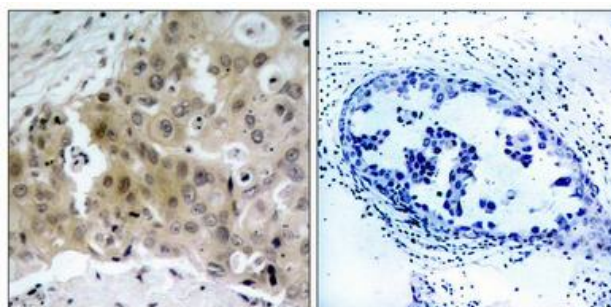
成分: PBS (without Mg<sup>2+</sup> and Ca<sup>2+</sup>), pH 7.3 containing 50% glycerol, 0.5% BSA and 0.02% sodium azide

研究领域: Epigenetics and Nuclear Signaling

储存和运输: Store at -20°C. Avoid repeated freezing and thawing



Immunofluorescence analysis of Phospho-VEGF Receptor 2 (Tyr1175) in MCF-7 cells using Phospho-VEGF Receptor 2 (Tyr1175) antibody, and DAPI (blue).



Immunohistochemistry analysis of paraffin-embedded Human breast carcinoma tissue using Phospho-VEGF Receptor 2 (Tyr1175) antibody. High-pressure and temperature Sodium Citrate pH 6.0 was used for antigen retrieval. Sample with blocking peptide on the right.