

PHOSPHO-TGF BETA RECEPTOR I (SER165) RABBIT PAB

货号: N225332

产品全名: Phospho-TGF beta Receptor I (Ser165) 兔多抗

基因符号 TGFBR1; ALK5; SKR4; TGF-beta receptor type-1; TGFR-1; Activin A receptor type II-like protein kinase of 53kD; Activin receptor-like kinase 5; ALK-5; ALK5; Serine/threonine-protein kinase receptor R4; SKR4; TGF-beta type I receptor; Transfor

UNIPROT ID: P36897

背景: The protein encoded by this gene forms a heteromeric complex with type II TGF-beta receptors when bound to TGF-beta, transducing the TGF-beta signal from the cell surface to the cytoplasm. The encoded protein is a serine/threonine protein kinase.

抗原: Synthetic peptide of human TGFBR1

经过测试的应用: WB,IHC-P,ICC/IF,ELISA

推荐稀释比: WB: 1/500-1/1000 IHC: 1/50-1/100 ICC: 1/100-1/200 ELISA: 1/10000

种属反应性: Rabbit

克隆性: Rabbit Polyclonal

分子量: Calculated MW: 56 kDa; Observed MW: 56 kDa

亚型: IgG

纯化: Affinity Purified

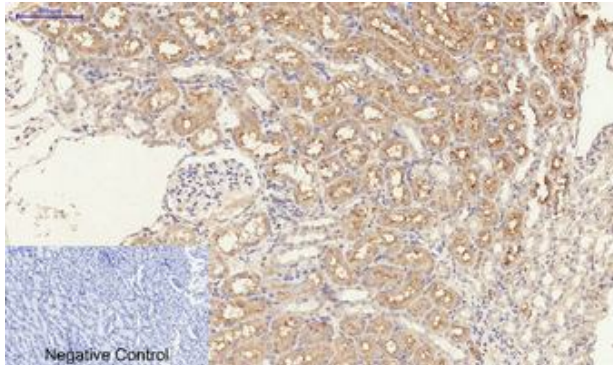
种属反应性: Human, Mouse and Rat

Modification: Phosphorylated

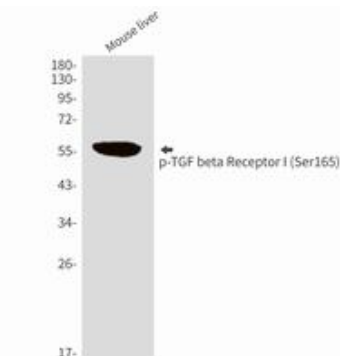
成分: PBS (without Mg²⁺ and Ca²⁺), pH 7.3 containing 50% glycerol, 0.5% BSA and 0.02% sodium azide

研究领域: Cardiovascular

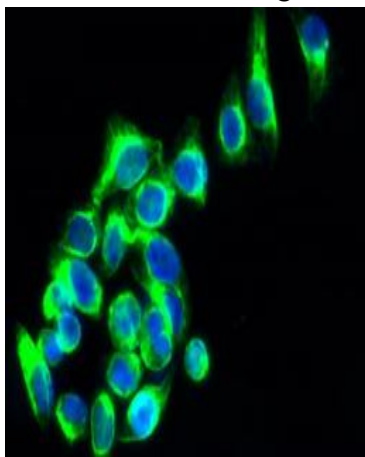
储存和运输: Store at -20°C. Avoid repeated freezing and thawing



Immunohistochemistry analysis of paraffin-embedded rat kidney tissue using Phospho-TGF beta Receptor I (Ser165) antibody. High-pressure and temperature Sodium Citrate pH 6.0 was used for antigen retrieval.



Western blot analysis of Phospho-TGF beta Receptor I (Ser165) in mouse liver lysates using Phospho-TGF beta Receptor I (Ser165) antibody.



Immunofluorescence analysis of Phospho-TGF beta Receptor I (Ser165) in HepG2 cells using Phospho-TGF beta Receptor I (Ser165) antibody (green).