

PHOSPHO-TAU (THR50) RABBIT MAB

货号: N262973

产品全名: Phospho-Tau (Thr50) 兔单克隆抗体

基因符号 MAPT; MAPTL; MTBT1; TAU; Microtubule-associated protein tau; Neurofibrillary tangle protein; Paired helical filament-tau; PHF-tau

UNIPROT ID: P10636

背景: This gene encodes the microtubule-associated protein tau (MAPT) whose transcript undergoes complex, regulated alternative splicing, giving rise to several mRNA species. MAPT transcripts are differentially expressed in the nervous system, depending on stage of neuronal maturation and neuron type.

抗原: A synthetic phosphopeptide corresponding to residues surrounding Thr50 of human Tau

经过测试的应用: WB, ICC/IF, IP

推荐稀释比: WB: 1/500-1/1000 IF: 1/50-1/200 IP: 1/20

种属反应性: Rabbit

克隆性: Rabbit Monoclonal

克隆编号: R06-5C8

分子量: Calculated MW: 79 kDa; Observed MW: 50-80 kDa

亚型: IgG

纯化: Affinity Purified

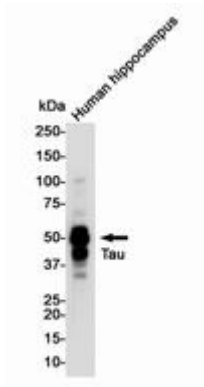
种属反应性: Human

Modification: Phosphorylated

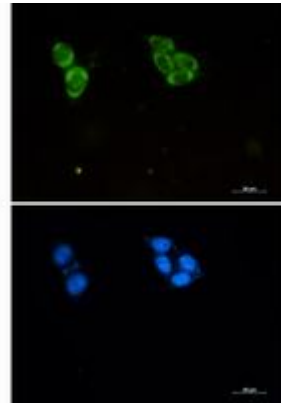
成分: PBS (without Mg²⁺ and Ca²⁺), pH 7.3 containing 50% glycerol, 0.5% BSA and 0.02% sodium azide

研究领域: Neuroscience

储存和运输: Store at -20°C. Avoid repeated freezing and thawing



Western blot analysis of Tau (Phospho-Thr50) in Human Hippocampus lysates using Tau (Phospho-Thr50) antibody.



Immunocytochemistry analysis of Phospho-Tau (Thr50) (green) in HCT116 using Phospho-Tau (Thr50) antibody, and DAPI (blue).