

PHOSPHO-SYNAPSIN I (SER9) RABBIT MAB

货号: N261705

产品全名: Phospho-Synapsin I (Ser9) 兔单克隆抗体

基因符号 SYN1; Synapsin-1; Brain protein 4.1; Synapsin I

UNIPROT ID: P17600

背景: This gene is a member of the synapsin gene family. Synapsins encode neuronal phosphoproteins which associate with the cytoplasmic surface of synaptic vesicles. Family members are characterized by common protein domains, and they are implicated in synaptogenesis and the modulation of neurotransmitter release, suggesting a potential role in several neuropsychiatric diseases.

抗原: A synthetic phosphopeptide corresponding to residues surrounding Ser9 of human Synapsin I

经过测试的应用: WB,IHC-P

推荐稀释比: WB: 1/500-1/1000 IHC: 1/50-1/100

种属反应性: Rabbit

克隆性: Rabbit Monoclonal

克隆编号: R06-7B8

分子量: Calculated MW: 74 kDa; Observed MW: 77 kDa

亚型: IgG

纯化: Affinity Purified

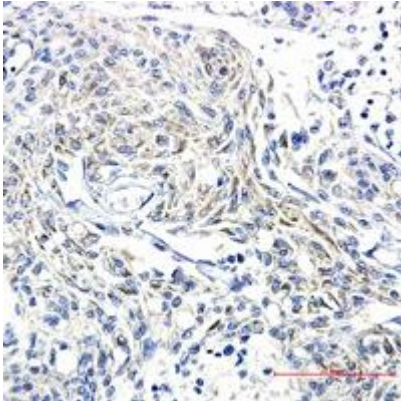
种属反应性: Human,Rat

Modification: Phosphorylated

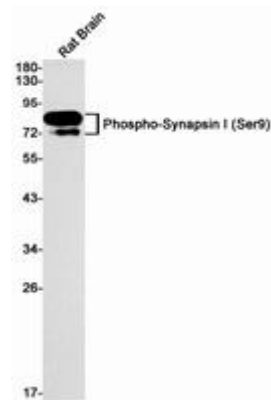
成分: PBS (without Mg²⁺ and Ca²⁺), pH 7.3 containing 50% glycerol, 0.5% BSA and 0.02% sodium azide

研究领域: Neuroscience

储存和运输: Store at -20°C. Avoid repeated freezing and thawing



Immunohistochemistry analysis of paraffin-embedded Human Brain using Synapsin I (Phospho- S9) antibody. High-pressure and temperature Sodium Citrate pH 6.0 was used for antigen retrieval.



Western blot analysis of Phospho-Synapsin I (Ser9) in rat Brain lysates using Phospho-Synapsin I (Ser9) antibody.