

PHOSPHO-STAT6 (TYR641) RABBIT PAB

货号: N225289

产品全名: Phospho-STAT6 (Tyr641) 兔多抗

基因符号 STAT6; Signal transducer and activator of transcription 6; IL-4 Stat

UNIPROT ID: P42226

背景: STAT6 transcription factor of the STAT family. Plays a central role in IL4-mediated biological responses. Induces the expression of BCL2L1/BCL-X(L), which is responsible for the anti-apoptotic activity of IL4.

抗原: Synthetic peptide of human STAT6

经过测试的应用: WB,IHC-P

推荐稀释比: WB: 1/500-1/1000 IHC: 1/50-1/100

种属反应性: Rabbit

克隆性: Rabbit Polyclonal

分子量: Calculated MW: 94 kDa; Observed MW: 110 kDa

亚型: IgG

纯化: Affinity Purified

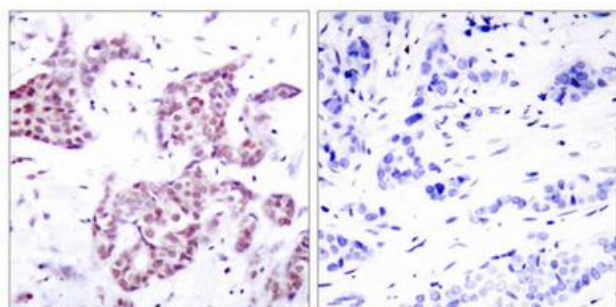
种属反应性: Human, Mouse and Rat

Modification: Phosphorylated

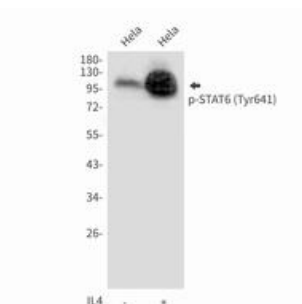
成分: PBS (without Mg²⁺ and Ca²⁺), pH 7.3 containing 50% glycerol, 0.5% BSA and 0.02% sodium azide

研究领域: Signal Transduction

储存和运输: Store at -20°C. Avoid repeated freezing and thawing



Immunohistochemistry analysis of paraffin-embedded Human breast carcinoma tissue using STAT6(Phospho-Tyr641) antibody. High-pressure and temperature Sodium Citrate pH 6.0 was used for antigen retrieval. Sample with blocking peptide on the right.



Western blot analysis of Phospho-STAT6 (Tyr641) in HeLa lysates using Phospho-STAT6 (Tyr641) antibody.