

## PHOSPHO-STAT1 (SER727) RABBIT PAB

货号: N225689

产品全名: Phospho-STAT1 (Ser727) 兔多抗

基因符号 STAT1; Signal transducer and activator of transcription 1-  
alpha/beta; Transcription factor ISGF-3 components p91/p84

**UNIPROT ID:** P42224

**背景:** The protein encoded by this gene is a member of the STAT protein family. In response to cytokines and growth factors, STAT family members are phosphorylated by the receptor associated kinases, and then form homo- or heterodimers that translocate to the cell nucleus where they act as transcription activators.

**抗原:** A synthesized peptide derived from human Phospho-STAT1 (S727)

**经过测试的应用:** WB,IHC-P

**推荐稀释比:** WB: 1/500-1/1000 IHC: 1/50-1/100

**种属反应性:** Rabbit

**克隆性:** Rabbit Polyclonal

**分子量:** Calculated MW: 87 kDa; Observed MW: 87 kDa

**亚型:** IgG

**纯化:** Affinity Chromatography

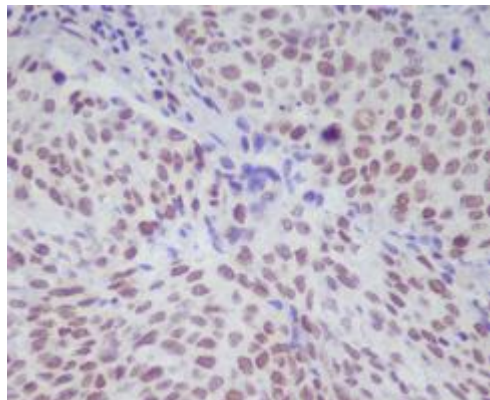
**种属反应性:** Human, Mouse and Rat

**Modification:** Phosphorylated

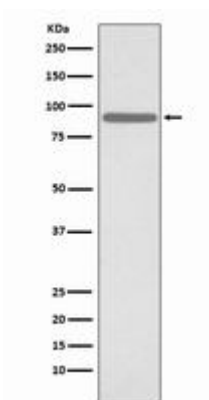
**成分:** PBS (without Mg<sup>2+</sup> and Ca<sup>2+</sup>), pH 7.3 containing 50% glycerol, 0.5% BSA and 0.02% sodium azide

**研究领域:** Signal Transduction

**储存和运输:** Store at -20°C. Avoid repeated freezing and thawing



Immunohistochemistry analysis of paraffin-embedded Human lung cancer using Phospho-STAT1 (S727) antibody. High-pressure and temperature Sodium Citrate pH 6.0 was used for antigen retrieval.



Western blot analysis of Phospho-STAT1 (S727) in HeLa lysates treated with etoposide using Phospho-STAT1 (Ser727) antibody.